

FTTx PRODUCT RANGE

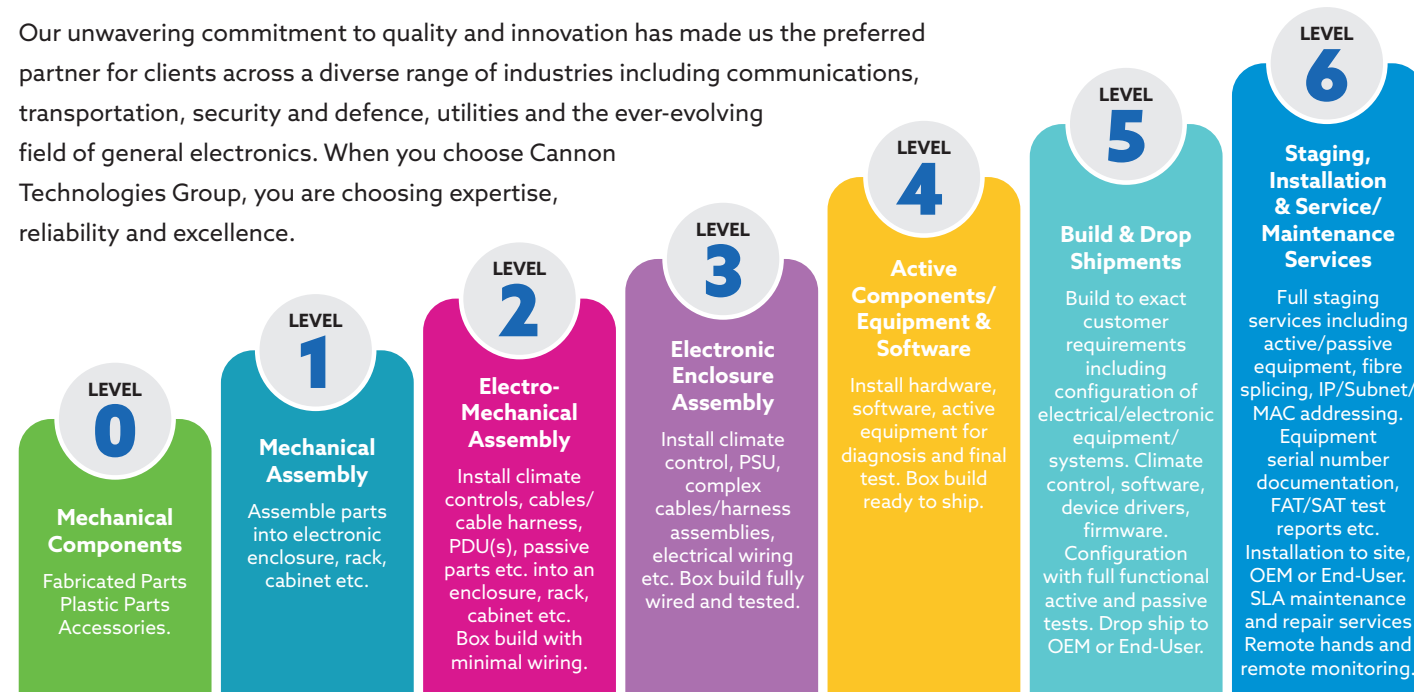
- Indoor
- Outdoor
- Fibre Exchange
- 'NGENx' Remote Control & Monitor

Why choose Cannon Technologies and Level 6 Services?



For over four decades, Cannon Technologies Group has stood as a paragon of excellence in the telecoms equipment field. With an extensive legacy spanning more than 45 years, we have consistently excelled in the precision craft of conceptualising, fabricating and seamlessly integrating cutting-edge indoor and outdoor enclosures and cabinets.

Our unwavering commitment to quality and innovation has made us the preferred partner for clients across a diverse range of industries including communications, transportation, security and defence, utilities and the ever-evolving field of general electronics. When you choose Cannon Technologies Group, you are choosing expertise, reliability and excellence.



Our in-house technical engineering team supports clients from initial concept through to reality.

In conjunction with our dedicated team, Cannon Technologies offers Level 6 Services, a comprehensive suite of solutions that includes free issue product stock management, integration, wiring, and software/firmware installation and setup.

Additionally, we provide on-site installation services, ensuring that your solution is up and running at its full potential within hours of installation.



It translates to a significantly faster time to market, expedited installations, quicker onboarding of your end customers, and a swift return on investment (ROI). Moreover, our Level 6 Services encompass ongoing support, ranging from remote monitoring of field-based equipment to electronic locking and user rights management, all the way to on-site service and maintenance.

This comprehensive approach guarantees quality of service (QOS), enhances customer retention and maximises profit generation.

Cannon Technologies' enclosures and cabinets are highly versatile and can be tailored to meet specific environmental, thermal management, and future-proofing requirements. Our extensive range of product and service options includes cable/fibre management, passive and active thermal management, environmental protection, and prewiring certified to the latest electrical standards.

Our expertise is a valuable asset to ALTNETS and network operators facing the increasingly complex challenges of deploying critical network infrastructure with enhanced efficiency. We are dedicated to connecting business and residential clients through innovation and end-to-end support.

Our latest offerings, the Fibre to the Home and Fibre to the Premise (FTTH/FTTP) cabinets, are meticulously designed, manufactured, and integrated at our state-of-the-art factory and Level 6 integration facilities.

The Level 6 Services approach is backed by a highly experienced team proficient in mechanical, electrical, and software disciplines, ensuring the swift delivery of cost-effective integrated solutions. These services encompass supply, integration, and ongoing support, providing you with a holistic solution that drives success in your projects.

ASSEMBLY



SITE INSTALLATION



ELECTRICAL AND ELECTRONIC
INTEGRATION & TEST



EQUIPMENT INSTALLATION SERVICE &
MAINTENANCE SUPPORT SERVICE



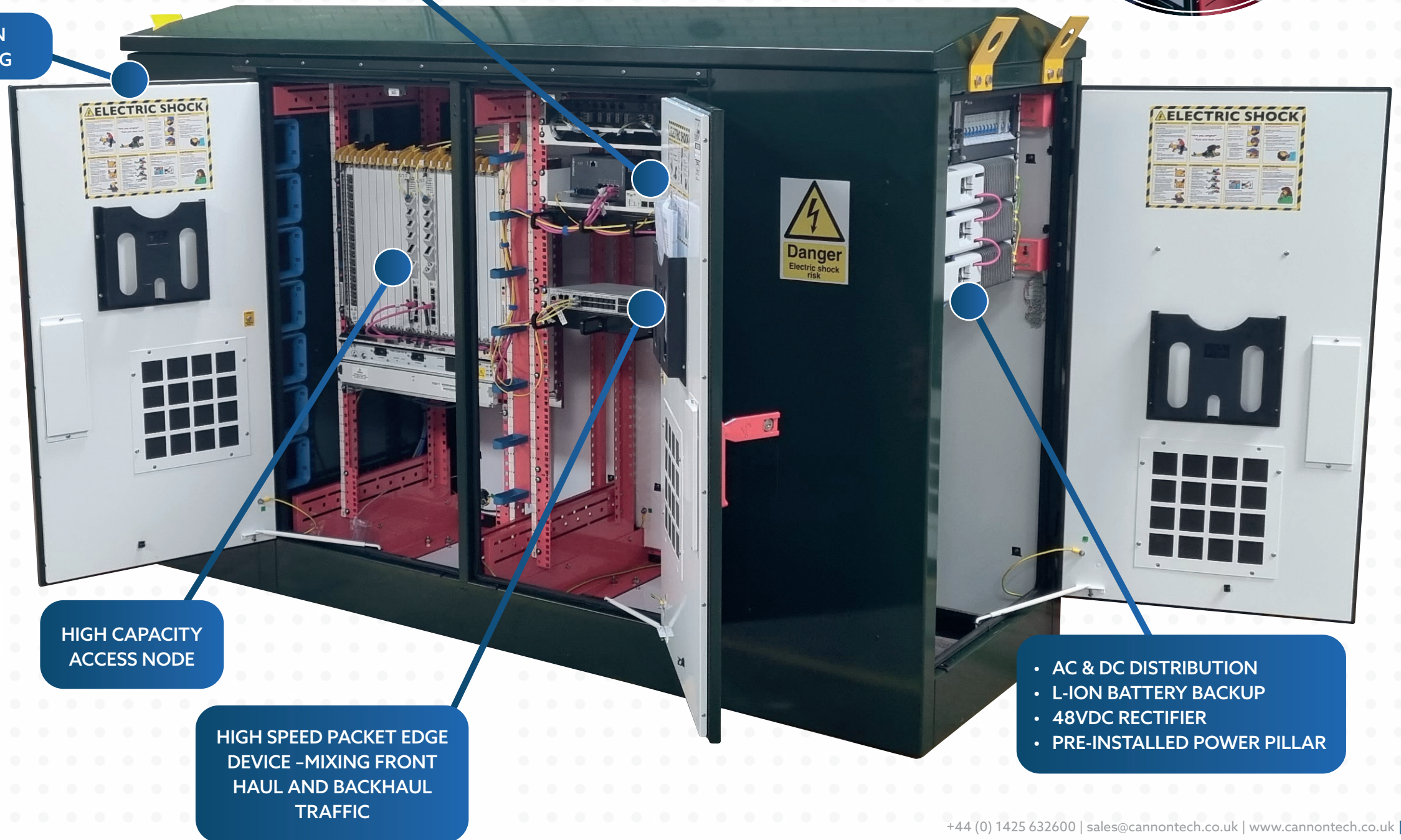
NXT GEN FIREWALL
Secure Access Service Edge (SASE)

OPTICAL DISTRIBUTION
SPLICING AND PATCHING

MANUFACTURING



DESIGN & PROJECT MANAGEMENT



HIGH CAPACITY
ACCESS NODE

HIGH SPEED PACKET EDGE
DEVICE - MIXING FRONT
HAUL AND BACKHAUL
TRAFFIC

- AC & DC DISTRIBUTION
- L-ION BATTERY BACKUP
- 48VDC RECTIFIER
- PRE-INSTALLED POWER PILLAR



Speed and cost-effectiveness of a one-stop turnkey solution

Engineering and technology are at the very core of our identity. At Cannon Technologies, we have a deep passion for these disciplines.

We specialise in delivering exceptionally technical, efficient and standardised solutions, encompassing both Commercial Off-The-Shelf (COTS) offerings and tailor-made, bespoke engineering services. Our mission is clear: to empower our customers to enhance their operational performance while effectively reducing costs.

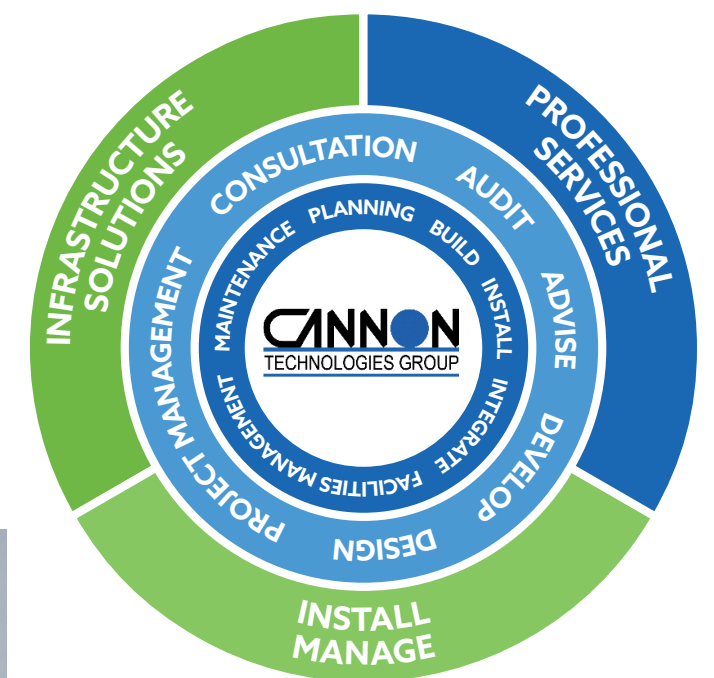
With a rich history spanning over 45 years of relentless advancement, Cannon Technologies remains agile and steadfast in our commitment to provide cutting-edge products and infrastructure solutions. We are adept at customising our offerings to align precisely with your organisation's unique requirements, ensuring a seamless fit for your needs.

Our standard product solutions are characterised by their innovative design, often mitigating the necessity for extensive customisation. This means that you can count on Cannon Technologies to deliver solutions that not just meet, but often exceed, your expectations, all while streamlining costs and optimising performance.

Service Team Installation (Care)

- Proving advice and support: H&S RAMS/lift plans, traffic management support
- Site installation and electrical connection
- Final site test and line card, fibre installation.
- Site handover and sign-off

Our Core Services



Focus on FTTx

- Pre-designed, pre-tested, pre-build range of FTTx cabinet common sizes
- Delivery ex-stock mechanical and thermal management product
- Integration within 10 working days (subject to client product availability or held in bonded stores at Level 6 facility)
- Our Level 6 Services allows for one order providing complete service from manufacture, assembly, integration of client hardware, software/firmware loading and configuration, factory testing, project management of installation including traffic management, lift and shift plus onsite installation, onsite electrical connection and final test

- Reduces client's own technical investment as Level 6 & Cannon provide technical advice, support and program management as well as client stock holding, stock management and stock reporting
- A faster route to positive cash flow and profit
- A revolutionary, no pain process.



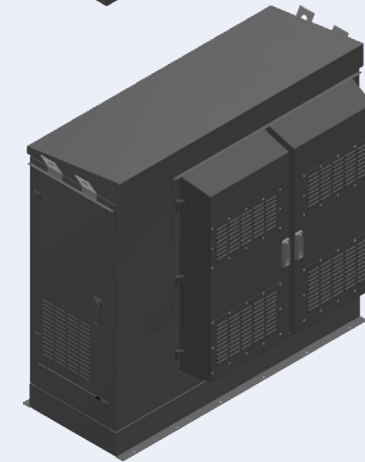
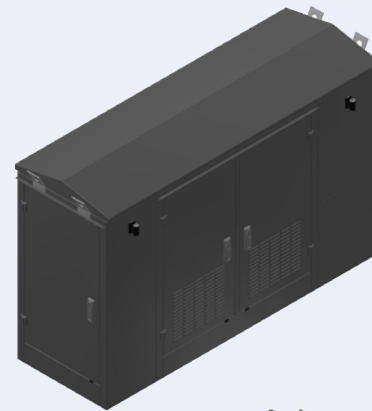
FTTx Integrated Outdoor IP55 Product Range

FTTx Outdoor cabinets from Cannon Technologies, which are designed for use in Telecom, Security, and Transportation (Rail) applications. These cabinets are specially designed to protect electronic components in challenging outdoor environments, ensuring that critical systems remain operational.

Here are some additional product details:

- Weather Protection:** Cannon Technologies' outdoor cabinets are built to withstand extreme weather conditions. They are designed to protect sensitive electronic equipment from rain, snow, extreme temperatures, and other environmental factors that could otherwise damage or disrupt the operation of these components.
- Vandalism Resistance:** In addition to weather protection, these cabinets are engineered to resist vandalism and tampering. This is crucial, especially in public areas or transportation settings where the cabinets may be exposed to potential threats.
- Custom Configurations:** The standard construction of these cabinets allows for flexibility in size and function. This means that customers can choose from various cabinet sizes and configurations to suit their specific needs. Whether it's housing networking equipment, security systems, or transportation control electronics, the cabinets can be tailored accordingly.
- Cooling Options:** Effective cooling is essential to prevent overheating of electronic components. These outdoor cabinets offer multiple cooling options to ensure that the enclosed equipment operates within its specified temperature range. This can include various ventilation systems, fans, or even air conditioning, depending on the requirements.
- Operational Continuity:** The primary objective of these cabinets is to ensure operational continuity. By providing a protective enclosure and climate control options, they help maintain the reliability and functionality of critical electronic systems, even in harsh outdoor environments.
- Applications:** These outdoor cabinets are suitable for various applications, including:
 - Telecom:** They can house networking equipment, base stations, and other telecommunications infrastructure in outdoor locations.
 - Security:** They are ideal for safeguarding surveillance cameras, access control systems, and other security-related electronics.
 - Transportation (Rail):** These cabinets can be used to protect signaling and control systems along railway tracks, ensuring safe and efficient rail operations.

In summary, Cannon Technologies' outdoor cabinets offer a comprehensive solution for protecting and maintaining the functionality of electronic equipment in outdoor settings, where exposure to extreme weather conditions and potential vandalism is a concern. Their flexibility in size and configuration, along with multiple cooling options, makes them a versatile choice for various applications in the telecom, security, and transportation sectors.



FTTx PRODUCT RANGE INTEGRATED READY FOR SERVICE

PART CODE	DESCRIPTION	SIZE	NOTES
S143800H-I-26210601	26U 19" MULTI BAY WITH TWO END COMPARTMENTS	26U (19") x 2200 WIDE x 730 DEEP	Integrated with UPS L-ION Battery(s), Rectifier 48VDC Distribution, Fibre splice management, Thermal management forced ambient air fan(s) 1kw per fan with optional speed control remote monitoring alarms - 3 fans = 3Kw @ 10 degrees DELTA "T"
S143800H-I-26210602	46SU ETSI MULTI BAY WITH TWO END COMPARTMENTS	46SU ETSI x 2200 WIDE x 730 DEEP	
S143800H-I-26210603	26U/46SU MULTI BAY WITH TWO END COMPARTMENTS	26U (19")/46SU ETSI x 2200 WIDE x 730 DEEP	
S143800H-I-26210604	26U (19") MULTI BAY WITH ONE END COMPARTMENT	26U (19") x 1700 WIDE x 730 DEEP	
S143800H-I-26210605	46SU (ETSI) MULTI BAY ONE END COMPARTMENT	46U (ETSI) x 1700 WIDE x 730 DEEP	
S143800H-I-26210606	26U (19") SINGLE BAY WITH ONE END COMPARTMENT	26U (19") x 1100 WIDE x 730 DEEP	
S143800H-I-26210607	46SU (ETSI) SINGLE BAY WITH ONE END COMPARTMENT	46U (ETSI) x 1100 WIDE x 730 DEEP	



IMAGE LEFT SHOWS: Cannon Integrated Multi-Bay Cab with UPS L-ION Battery(s), Rectifier 48VDC Distribution, Fibre splice management, client NOKIA FX16, ADVA, FORTINET equipment installed, cabled, configured (IP address etc), firmware updates and fibre spliced.

IMAGES BELOW SHOW: (LEFT) Cannon Integrated FTTx Outdoor Cab located on Cannon root with power pillar; allowing DNO power ready prior to cabinet landing onsite. Equipment powered day 1. (RIGHT) Cannon Multi-Bay Cab Root with Integrated Meter/Power Pillar, Temp cover.



FTTx SINGLE BAY PRODUCT RANGE

WITH ELECTRICAL INSTALLATION

Outdoor C-TYPE FTTx Cabinet With Single Door, Fan(s), 800W

- G600/275 or optional Stainless Steel 1.4003 Construction
- Removable door(s), rear panel (when installed), roof & base plate
- Double-wall with internal insulation panel option
- IP 55 or NEMA 12
- Extensive range of 19" cabinet accessories
- Remote control & monitoring options via SNMP, MODbus 485, Dry-contacts
- Electronic locking options

PRODUCT FEATURES

- EMC Shielding: No (OPTIONAL DESIGN ON REQUEST)
- Thermal management forced ambient air fan(s) 1kw per fan @100% (2 installed) with optional speed control remote monitoring alarms
- Complies With: IEC 61969-1; IEC 61969-2; IEC 61969-3; IEC 60917-1; IEC 60917-2; ETS 300119; IEC 60529; DIN EN 50178; VDE 0160; ETSI EN 300019-1-4

ADDITIONAL PRODUCT DETAILS

In the realm of Telecom, Security, and Transportation (Rail) applications, the demand for sophisticated outdoor electronic enclosures is paramount. Cannon Technologies has emerged as a trusted provider of outdoor cabinets designed explicitly for these critical sectors. These outdoor cabinets are meticulously crafted to shield electronic components from the rigors of extreme weather conditions and the persistent threat of vandalism, thereby ensuring the uninterrupted functionality of vital systems. With a foundation in standard construction, these cabinets offer a spectrum of configuration possibilities, both in size and function, coupled with a versatile range of cooling solutions.

Image shows plinth with cab above



PART CODE	*RHRH	*LHLH	*RHLH	*LHRH	*RHBP	*LHBP
S143800E-218060	-RHRH	-LHLH	-RHLH	-LHRH	-RHBP	-LHBP
S143800E-258060	-RHRH	-LHLH	-RHLH	-LHRH	-RHBP	-LHBP
S143800E-308060	-RHRH	-LHLH	-RHLH	-LHRH	-RHBP	-LHBP
S143800E-218080	-RHRH	-LHLH	-RHLH	-LHRH	-RHBP	-LHBP
S143800E-258080	-RHRH	-LHLH	-RHLH	-LHRH	-RHBP	-LHBP
S143800E-308080	-RHRH	-LHLH	-RHLH	-LHRH	-RHBP	-LHBP
S143800E-2180100	-RHRH	-LHLH	-RHLH	-LHRH	-RHBP	-LHBP
S143800E-2580100	-RHRH	-LHLH	-RHLH	-LHRH	-RHBP	-LHBP
S143800E-3080100	-RHRH	-LHLH	-RHLH	-LHRH	-RHBP	-LHBP

Product door layout notes:

- *RH = RIGHT HAND HINGED DOOR
- *LH = LEFT HAND HINGED DOOR
- *BP = BACK PANEL (REMOVEABLE)

Example:

- *RHLH = RIGHT-HAND HINGED FRONT & LEFT-HAND HINGED REAR DOOR
- *LHBP = LEFT HAND HINGED DOOR & BACK PANEL (REMOVEABLE)

CONTENTS SUPPLIED

ITEM	DESCRIPTION	QTY
1	Double skin body with internal ceiling plate (including lifting eyes)	1
2	Roof Panel, hinged for ease of access to climate control fans	2
3	Double skin removable front door; *3-point lock, swivel handle with CAM lock as standard (Options: DIN profile half cylinder, Padlock staple/hasp, and Electronic locking), door opening angle 165 °, door stay allows 120 °; door hinges left + right hand options	1
4	Double skin rear door* or panel option (see part code above)	1
5	Base/Plinth (S143803x) mounted to base of cab as standard (supplied loose on request)	1
6	Depth members for 19 "/ metric panel/slide mounts fitted as standard	4
7	19" panel mounting posts (2 pairs) fitted as standard; Optional ETSI, backboard & mixture of 19"/ETSI mounting arrangements on request	1
8	Earth/grounding kit, fitted	1
9	Radial fan (2 pieces), 360 m ³ /h, 53 dB (A), max. 48vdc, multiple thermos sensors; Filter media G4 to front door/ & rear panel/door as part code shown above	1
10	Optional Laptop carrier (P6417501-KIT), mounted on the inside of the door	1
11	Document Wallet (CA020), mounted on the inside of the door	1
12	Electrical Installation (S143838x) mounted on 5U recess bracket; biased to front lower 19" as standard (Contact Cannon for further details of available configurations)	1

DESCRIPTION	SIZE		
	HEIGHT	WIDTH	DEPTH
FTTx S-TYPE SINGLE BAY DOUBLE WALL INSULATED	21U	800	600
FTTx S-TYPE SINGLE BAY DOUBLE WALL INSULATED	25U	800	600
FTTx S-TYPE SINGLE BAY DOUBLE WALL INSULATED	30U	800	600
FTTx S-TYPE SINGLE BAY DOUBLE WALL INSULATED	21U	800	800
FTTx S-TYPE SINGLE BAY DOUBLE WALL INSULATED	25U	800	800
FTTx S-TYPE SINGLE BAY DOUBLE WALL INSULATED	30U	800	800
FTTx S-TYPE SINGLE BAY DOUBLE WALL INSULATED	21U	800	1000
FTTx S-TYPE SINGLE BAY DOUBLE WALL INSULATED	25U	800	1000
FTTx S-TYPE SINGLE BAY DOUBLE WALL INSULATED	30U	800	1000

FTTx DOUBLE BAY WITH END COMPARTMENT PRODUCT RANGE

WITH OR WITHOUT ELECTRICAL INSTALLATION

Outdoor S-TYPE FTTx Cabinet with Double Doors, IP55 Fan(s) or IP65 Heat Exchanger

- G600/275 or optional Stainless Steel 1.4003 Construction
- Removable front door, rear door or rear panel options, roof & base plates
- Single & double-wall with internal insulation panel options; see part code details below
- IP 55 or NEMA 12 / IP65 or NEMA 4x
- Extensive range of 19" cabinet accessories
- Remote control & monitoring options via SNMP, MODbus 485, Dry-contacts
- Electronic locking options

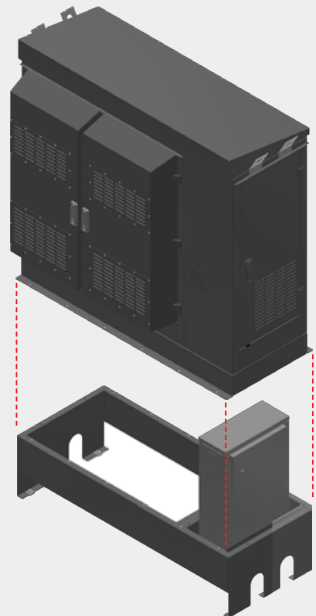
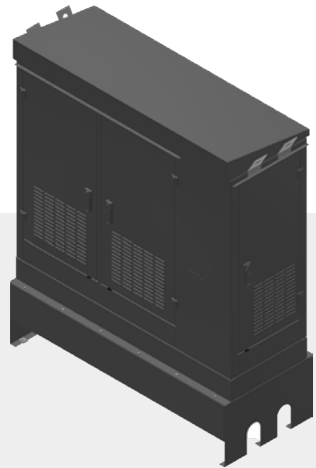
PRODUCT FEATURES

- EMC Shielding: No (OPTIONAL DESIGN ON REQUEST)
- Thermal management via heat exchangers or forced ambient air fan(s) 1kw per fan with optional speed control remote monitoring alarms
- Complies With: IEC 61969-1; IEC 61969-2; IEC 61969-3; IEC 60917-1; IEC 60917-2; ETS 300119; IEC 60529; DIN EN 50178; VDE 0160; ETSI EN 300019-1-4

ADDITIONAL PRODUCT DETAILS

In the realm of Telecom, Security, and Transportation (Rail) applications, the demand for sophisticated outdoor electronic enclosures is paramount. Cannon Technologies has emerged as a trusted provider of outdoor cabinets designed explicitly for these critical sectors. These outdoor cabinets are meticulously crafted to shield electronic components from the rigors of extreme weather conditions and the persistent threat of vandalism, thereby ensuring the uninterrupted functionality of vital systems. With a foundation in standard construction, these cabinets offer a spectrum of configuration possibilities, both in size and function, coupled with a versatile range of cooling solutions.

Images show (TOP) cab on standard root (BOTTOM) root integrated power pillar and cab with IP65 heat exchanger doors above



PART CODE	*FDRD	*FDBP
S143800H-DBEP-17060	-FDRD	-FDBP
S143800H-DBEP-17060A	-FDRD	-FDBP
S143800H-DBEP-17060B	-FDRD	-FDBP
S143800H-DBEP-17060C	-FDRD	-FDBP
S143800H-DBEP-17060D	-FDRD	-FDBP
S143800H-DBEP-17060E	-FDRD	-FDBP

Product door layout notes:

- *FD = FRONT DOORS
- *RD = REAR DOORS
- *BP = BACK PANEL (REMOVEABLE)

Example:

- *FDRD = FRONT HINGED & REAR HINGED DOORS
- *FDBP = FRONT HINGED DOORS & BACK PANELS (REMOVEABLE)

CONTENTS SUPPLIED

ITEM	DESCRIPTION	QTY
1	Single or Double skin Body options (see part code above) with internal ceiling plate (including lifting eyes)	1
2	Single skin Roof Panel (see part code above), hinged for ease of access to climate control fans	2
3	Single or Double skin Removable Front Door options (see part code above); 3-point lock, swivel handle with CAM lock as standard (Options: DIN profile half cylinder, Padlock staple/hasp, and Electronic locking), door opening angle 165 °, door stay allows 120 °; door hinges left + right hand options	1
4	Single or double skin rear door or panel option (see part code above)	1
5	Base/Plinth (S143803x) mounted to base of cab as standard (supplied loose on request)	1
6	Depth members for 19 " / metric panel/slide mounts fitted as standard	4
7	19" panel mounting posts (2 pairs) fitted as standard; Optional ETSI, backboard & mixture of 19"/ETSI mounting arrangements on request	1
8	Earth/grounding kit, fitted	1
9	Radial fan (2 pieces), 360 m ³ /h, 53 dB (A), max. 48vdc, multiple thermos sensors; Filter media G4 to front door/ & rear panel/door as part code shown above	1
10	Optional Laptop carrier (P6417501-KIT), mounted on the inside of the door	1
11	Document Wallet (CA020), mounted on the inside of the door	1
12	Electrical Installation (S143838x) mounted on 5U recess bracket; biased to front lower 19" as standard (Contact Cannon for further details of available configurations)	1

DESCRIPTION	SIZE		
	HEIGHT	WIDTH	DEPTH
FTTx S-TYPE DOUBLE BAY DOUBLE WALL INSULATED WITH 48VDC FANS	26U	1700	600
FTTx S-TYPE DOUBLE BAY SINGLE WALL INSULATED WITH 48VDC FANS	26U	1700	600
FTTx S-TYPE DOUBLE BAY DOUBLE WALL INSULATED WITH 48VDC FANS ELECTRICAL CONSUMER UNIT (SEE PRODUCT DATASHEET)	26U	1700	600
FTTx S-TYPE DOUBLE BAY DOUBLE WALL INSULATED WITH IP65 HEAT EXCHANGERS & WITH 48VDC FANS ELECTRICAL CONSUMER UNIT (SEE PRODUCT DATASHEET)	26U	1700	600
FTTx S-TYPE DOUBLE BAY DOUBLE WALL INSULATED WITH ELECTRICAL CONSUMER UNIT (SEE PRODUCT DATASHEET) & INTEGRATED POWER PILLAR WITH ROOT	26U	1700	600
FTTx S-TYPE DOUBLE BAY DOUBLE WALL INSULATED WITH IP65 HEAT EXCHANGERS & WITH 48VDC FANS ELECTRICAL CONSUMER UNIT (SEE PRODUCT DATASHEET) & INTEGRATED POWER PILLAR WITH ROOT	26U	1700	600

FTTx SINGLE BAY WITH END COMPARTMENT PRODUCT RANGE

WITH OR WITHOUT ELECTRICAL INSTALLATION

Outdoor S-TYPE FTTx Cabinet IP55 or or IP65 Heat Exchanger with Single Door, Fan(s), 900W

- G600/275 or optional Stainless Steel 1.4003 Construction
- Removable front door, rear door or rear panel options, roof & base plates
- Single & double-wall with internal insulation panel options; see part code details below
- IP 55 or NEMA 12 / IP65 or NEMA 4x
- Extensive range of 19" cabinet accessories
- Remote control & monitoring options via SNMP, MODbus 485, Dry-contacts
- Electronic locking options

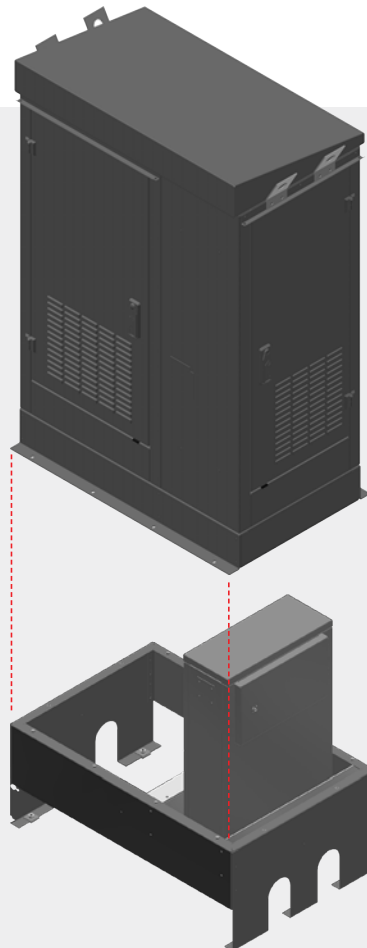
PRODUCT FEATURES

- EMC Shielding: No (OPTIONAL DESIGN ON REQUEST)
- Thermal management via heat exchangers or forced ambient air fan(s) 1kw per fan with optional speed control remote monitoring alarms
- Complies With: IEC 61969-1; IEC 61969-2; IEC 61969-3; IEC 60917-1; IEC 60917-2; ETS 300119; IEC 60529; DIN EN 50178; VDE 0160; ETSI EN 300019-1-4

ADDITIONAL PRODUCT DETAILS

In the realm of Telecom, Security, and Transportation (Rail) applications, the demand for sophisticated outdoor electronic enclosures is paramount. Cannon Technologies has emerged as a trusted provider of outdoor cabinets designed explicitly for these critical sectors. These outdoor cabinets are meticulously crafted to shield electronic components from the rigors of extreme weather conditions and the persistent threat of vandalism, thereby ensuring the uninterrupted functionality of vital systems. With a foundation in standard construction, these cabinets offer a spectrum of configuration possibilities, both in size and function, coupled with a versatile range of cooling solutions.

Image shows root with integrated power pillar and cab above



PART CODE	*FDRD	*FDBP
S143800H-SBEP-11060	-FDRD	-FDBP
S143800H-SBEP-11060A	-FDRD	-FDBP
S143800H-SBEP-11060B	-FDRD	-FDBP
S143800H-SBEP-11060C	-FDRD	-FDBP
S143800H-SBEP-11060D	-FDRD	-FDBP
S143800H-SBEP-11060E	-FDRD	-FDBP

Product door layout notes:
 *FD = FRONT DOOR
 *RD = REAR DOORS
 *BP = BACK PANEL (REMOVEABLE)

Example:
 *FDRD = FRONT HINGED & REAR HINGED DOOR
 *FDBP = FRONT HINGED DOOR & BACK PANEL (REMOVEABLE)

CONTENTS SUPPLIED

ITEM	DESCRIPTION	QTY
1	Single or Double skin Body options (see part code above) with internal ceiling plate (including lifting eyes)	1
2	Single skin Roof Panel (see part code above), hinged for ease of access to climate control fans	2
3	Single or Double skin Removable Front Door options (see part code above); 3-point lock, swivel handle with CAM lock as standard (Options: DIN profile half cylinder, Padlock staple/hasp, and Electronic locking), door opening angle 165 °, door stay allows 120 °; door hinges left + right hand options	1
4	Single or double skin rear door or panel option (see part code above)	1
5	Base/Plinth (S143803x) mounted to base of cab as standard (supplied loose on request)	1
6	Depth members for 19 "/ metric panel/slide mounts fitted as standard	4
7	19" panel mounting posts (2 pairs) fitted as standard; Optional ETSI, backboard & mixture of 19"/ETSI mounting arrangements on request	1
8	Earth/grounding kit, fitted	1
9	Radial fan (2 pieces), 360 m ³ /h, 53 dB (A), max. 48vdc, multiple thermos sensors; Filter media G4 to front door/ & rear panel/door as part code shown above	1
10	Optional Laptop carrier (P6417501-KIT), mounted on the inside of the door	1
11	Document Wallet (CA020), mounted on the inside of the door	1
12	Electrical Installation (S143838x) mounted on 5U recess bracket; biased to front lower 19" as standard (Contact Cannon for further details of available configurations)	1

DESCRIPTION	SIZE		
	HEIGHT	WIDTH	DEPTH
FTTx S-TYPE SINGLE BAY DOUBLE WALL INSULATED WITH 48VDC FANS	26U	1100	600
FTTx S-TYPE SINGLE BAY SINGLE WALL INSULATED WITH 48VDC FANS	26U	1100	600
FTTx S-TYPE SINGLE BAY DOUBLE WALL INSULATED WITH 48VDC FANS ELECTRICAL CONSUMER UNIT (SEE PRODUCT DATASHEET)	26U	1100	600
FTTx S-TYPE SINGLE BAY DOUBLE WALL INSULATED WITH HEAT EXCHANGERS & WITH 48VDC FANS ELECTRICAL CONSUMER UNIT (SEE PRODUCT DATASHEET)	26U	1100	600
FTTx S-TYPE SINGLE BAY DOUBLE WALL INSULATED WITH ELECTRICAL CONSUMER UNIT (SEE PRODUCT DATASHEET) & INTEGRATED POWER PILLAR WITH ROOT	26U	1100	600
FTTx S-TYPE SINGLE BAY DOUBLE WALL INSULATED WITH HEAT EXCHANGERS & WITH 48VDC FANS ELECTRICAL CONSUMER UNIT (SEE PRODUCT DATASHEET) & INTEGRATED POWER PILLAR WITH ROOT	26U	1100	600

FTTx MULTI-BAY WITH END COMPARTMENTS PRODUCT RANGE

WITH OR WITHOUT ELECTRICAL INSTALLATION

Outdoor S-TYPE FTTx Cabinet With Multiple Doors, Fan(s), 900W

- G600/275 or optional Stainless Steel 1.4003 Construction
- Removable front doors, side doors, roof & base plates
- Single wall with internal insulation panel options; see part code details below
- RH Side Compartment for Fibre Management
- LH Side Compartment for Power Management
- LH Central Compartment for Lead Acid Batteries
- RH Central Compartment for 19" Equipment
- IP 55 or NEMA 12
- Extensive range of 19" & fibre management accessories
- Remote control & monitoring options via SNMP, MODbus 485, Dry-contacts
- Electronic locking options

PRODUCT FEATURES

- EMC Shielding: No (OPTIONAL DESIGN ON REQUEST)
- Thermal management via optional forced ambient air fan(s) 1kw per fan with optional speed control remote monitoring alarms
- Complies With: IEC 61969-1; IEC 61969-2; IEC 61969-3; IEC 60917-1; IEC 60917-2; ETS 300119; IEC 60529; DIN EN 50178; VDE 0160; ETSI EN 300019-1-4

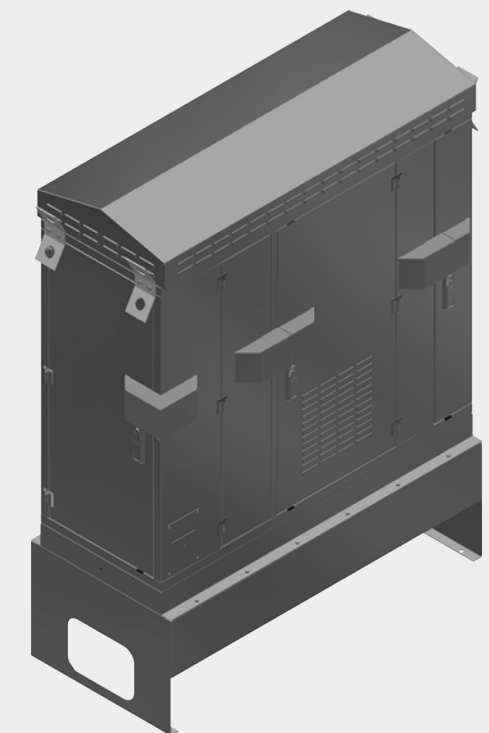
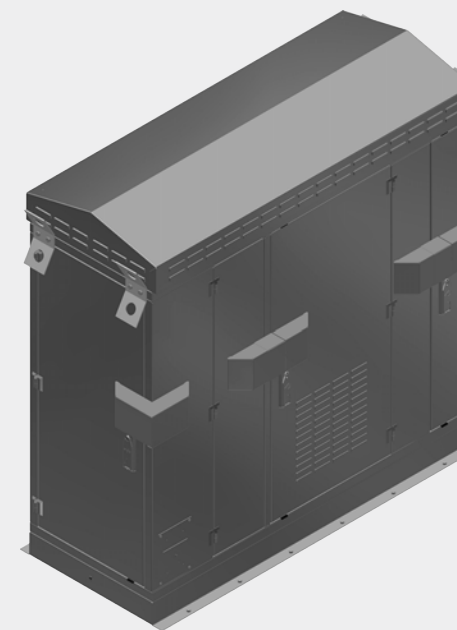
ADDITIONAL PRODUCT DETAILS

In the realm of Telecom, Security, and Transportation (Rail) applications, the demand for sophisticated outdoor electronic enclosures is paramount. Cannon Technologies has emerged as a trusted provider of outdoor cabinets designed explicitly for these critical sectors. These outdoor cabinets are meticulously crafted to shield electronic components from the rigors of extreme weather conditions and the persistent threat of vandalism, thereby ensuring the uninterrupted functionality of vital systems. With a foundation in standard construction, these cabinets offer a spectrum of configuration possibilities, both in size and function, coupled with a versatile range of cooling solutions.

CONTENTS SUPPLIED

ITEM	DESCRIPTION	QTY
1	Single skin Body with insulation inner panel option (see part code above) with internal ceiling plate (including lifting eyes)	1
2	Single skin roof panel (see part code above), hinged for ease of access to optional climate control fans	2
3	Single skin removable front/side doors (see part code above); 3-point locking, swivel handle with CAM lock & cover for KABA Enclosure Guard as standard (Options: DIN profile half cylinder, Padlock staple/hasp, and Electronic locking), door opening angle 165°, door stay allows 120°; door hinges left + right hand options	1
4	Single skin rear panel option (see part code above)	1
5	Base/Plinth and root mounted options to base of cab; plinth as standard (root supplied loose on request)	1
6	Depth members for 19" / metric panel/slide mounts fitted as standard	4
7	19" panel mounting posts (2 pairs) fitted as standard; Optional ETSI, backboard & mixture of 19"/ETSI mounting arrangements on request	1
8	Earth/grounding kit, fitted	1
9	Optional radial fan (2 pieces), 360 m ³ /h, 53 dB (A), max. 48vdc, multiple thermos sensors; Filter media G4 to front door/ & rear panel/door as part code shown above	1
10	Standard Laptop carrier (P6417501-KIT), mounted on the inside of the door	1
11	Document Wallet (CA020), mounted on the inside of the door	1
12	Optional Electrical Installation (S143838x) mounted to LH backboard; (Contact Cannon for further details of available configurations)	1

PART CODE	DESCRIPTION	SIZE		
		HEIGHT	WIDTH	DEPTH
S17500-3015060-3BAY	FTTx S-TYPE SINGLE BAY MULTI DOOR COMPARTMENT WITHOUT THERMAL MANAGEMENT	28U	1100	600
S17500-3015060-3BAY-01	FTTx S-TYPE SINGLE BAY MULTI DOOR COMPARTMENT WITH 48VDC FANS	28U	1100	600
S17500-3015060-3BAY-02	FTTx S-TYPE SINGLE BAY MULTI DOOR COMPARTMENT WITH 48VDC FANS & ELECTRICAL	28U	1100	600
S17500-3015060-3BAY1	FTTx S-TYPE SINGLE BAY MULTI DOOR COMPARTMENT WITHOUT THERMAL MANAGEMENT (CF VARIANT)	28U	1100	600
S17500-3015060-3BAY1-01	FTTx S-TYPE SINGLE BAY MULTI DOOR COMPARTMENT WITH 48VDC FANS (CF VARIANT)	28U	1100	600
S17500-3015060-3BAY1-02	FTTx S-TYPE SINGLE BAY MULTI DOOR COMPARTMENT WITH 48VDC FANS & ELECTRICAL (CF VARIANT)	28U	1100	600



Images show (LEFT) cab on standard plinth (RIGHT) cab on standard root

FTTx SINGLE BAY FIBRE DROP-LINK & POWER PILLAR CABS

WITH OR WITHOUT FIBRE OR ELECTRICAL INSTALLATION

Outdoor C-TYPE FTTx Drop Link Cabinet With Single Door, Fan(s), 900W

- G600/275 or optional Stainless Steel 1.4003 Construction
- Removable front door, roof & base plates
- Single wall with optional internal insulation panel; see part code details below
- IP 55 or NEMA 12 / IP65 or NEMA 4x
- Extensive range of Fibre management & fibre splice cassette accessories
- Remote control & monitoring options via SNMP, MODbus 485, Dry-contacts
- Electronic locking options
- Natural Air Convection

ADDITIONAL PRODUCT DETAILS

In the realm of Telecom, Security, and Transportation (Rail) applications, Cannon Technologies has emerged as a trusted provider of outdoor cabinets designed explicitly for these critical sectors. These outdoor cabinets are meticulously crafted to protect equipment from the rigors of extreme weather conditions and the persistent threat of vandalism, thereby ensuring the uninterrupted functionality of vital systems. With a foundation in standard construction, these cabinets offer a spectrum of configuration possibilities, both in size and function, coupled with a versatile range of accessories including fibre management and fibre splicing cassettes/chassis.

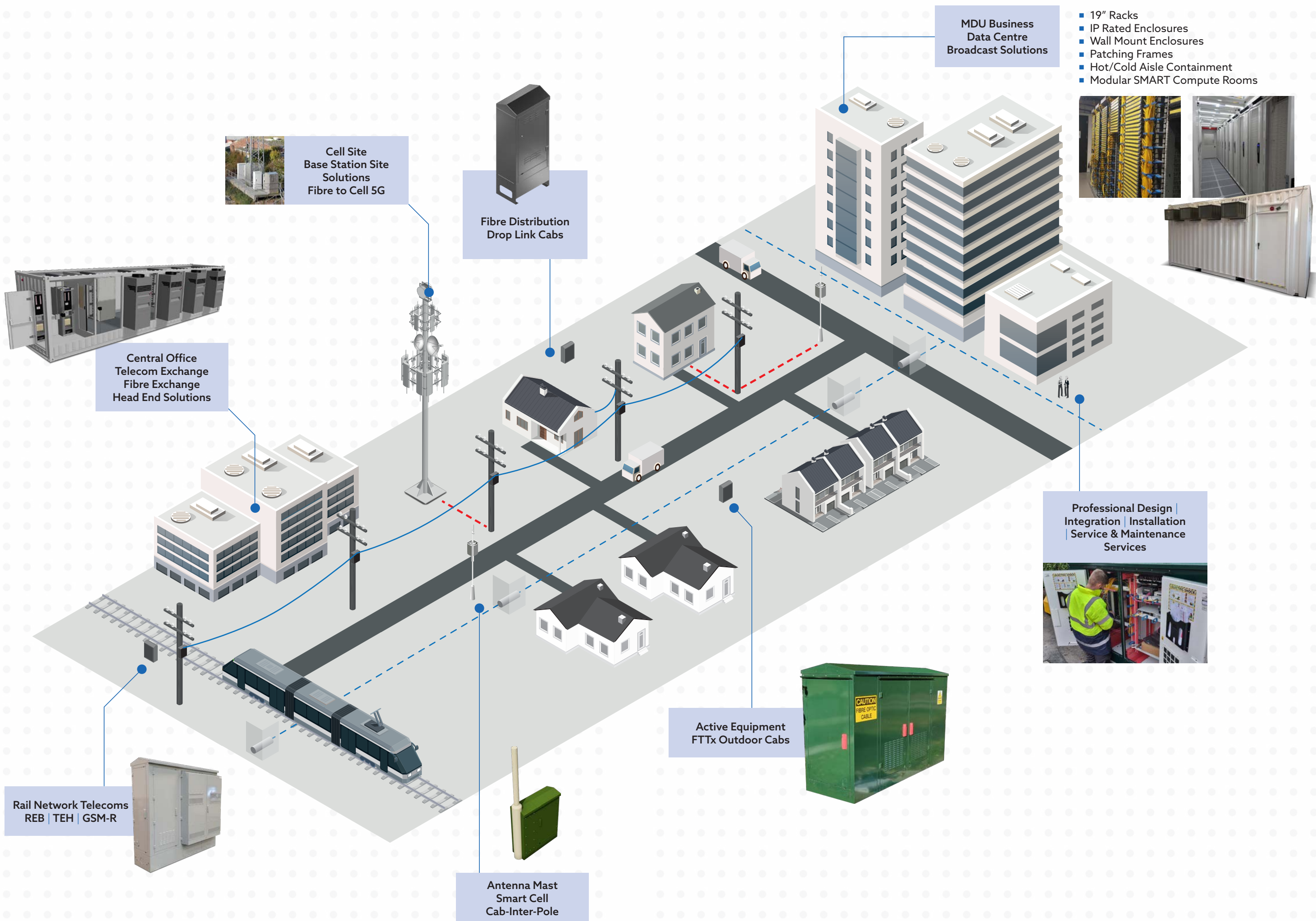
PART CODE	DESCRIPTION	SIZE		
		HEIGHT	WIDTH	DEPTH
C171800C-PP-90543301	FTTx C-TYPE SINGLE BAY SINGLE WALL FIBRE DROP LINK CAB - WITH BACKBOARD	900	540	330
C171800C-PP-90543302	FTTx C-TYPE SINGLE BAY SINGLE WALL FIBRE DROP LINK CAB - WITH FIBRE MANAGEMENT	900	540	330
C171800C-PP-90543303	FTTx C-TYPE SINGLE BAY SINGLE WALL POWER PILLAR CAB - WITH BACKBOARD	900	540	330
C171800C-PP-90543304	FTTx C-TYPE SINGLE BAY SINGLE WALL POWER PILLAR CAB - WITH CONSUMER UNIT	900	540	330

CONTENTS SUPPLIED

ITEM	DESCRIPTION	QTY
1	Single skin Body (see part code above) with internal ceiling plate (including lifting eyes where applicable)	1
2	Single skin Roof Panel (see part code above)	2
3	Single skin Removable Front Door (see part code above); 3-point lock, swivel handle with CAM lock as standard (Options: DIN profile half cylinder, Padlock staple/hasp, and Electronic locking), door opening angle 165 °, door stay allows 120 °; door hinges left + right hand options	1
-	Single skin panel option on request	1
4	Base/ root mounted to base of cab as standard (supplied loose on request)	1
5	Earth/grounding kit, fitted	1
6	Document Wallet (CA020), mounted on the inside of the door	1
7	Electrical Installation (where applicable) mounted on plywood backboard; Contact Cannon for further details of available configurations	1



Images show (LEFT) cab on standard plinth (RIGHT) root and cab above



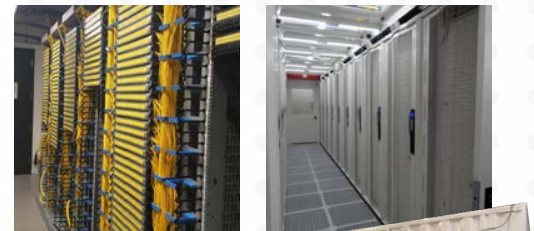
Cell Site
Base Station Site
Solutions
Fibre to Cell 5G

Fibre Distribution
Drop Link Cabs

Central Office
Telecom Exchange
Fibre Exchange
Head End Solutions

MDU Business
Data Centre
Broadcast Solutions

- 19" Racks
- IP Rated Enclosures
- Wall Mount Enclosures
- Patching Frames
- Hot/Cold Aisle Containment
- Modular SMART Compute Rooms



Professional Design |
Integration | Installation
Service & Maintenance
Services



Rail Network Telecoms
REB | TEH | GSM-R

Active Equipment
FTTx Outdoor Cabs



Antenna Mast
Smart Cell
Cab-Inter-Pole



JOSCAR
REGISTERED



Cannon Technologies Ltd
Queensway
New Milton
Hampshire
BH25 5NU
UK

+44 (0) 1425 632600 | sales@cannontech.co.uk

WWW.CANNONTECH.CO.UK