

# Cabinet to Raft Installation sheet

Used with drawing No: DC0046-2 for fixing detail

## **RAFt SYSTEM**

### **(Raised Access Floor technology)**

#### **-INSTALLATION INSTRUCTIONS-**

The Cannon RAFt System is compatible with the majority of Raised Access Floors with a modular tile size of 600mm x 600mm in current use worldwide.

Installation of the Cannon RAFt System is very simple as the system is designed to replace complete floor tiles in Raised Access Flooring where Cannon cabinets are to be installed.

#### **RAFt Depth**

The RAFt consists of a series of individual 'picture frames' which are bolted together and which always have the same depth (front-to-back) dimension as a floor tile (600mm). Cabinets with a depth (front-to-back) dimension greater than 600mm, overhang the RAFt equally at front and rear, i.e. a 900mm cabinet would overhang the RAFt by 150mm at the front and rear. However, the RAFt raises the cabinet above the floor sufficiently to allow the overhung tiles to be raised vertically and slid sideways for access to the under floor void.

#### **RAFt Width**

It is preferable that the frame width matches the cabinet width (600, 700 or 800mm). Cabinets wider than 600mm can be fitted to 600mm wide RAFt frames, but some obstruction to cable access would occur as a result, e.g. 3 x 800mm wide cabinets could be sited onto 4 x 600mm wide RAFts.

Where a RAft is built up from a multiple of frame widths other than the tile modular width of 600mm, it is likely that a part tile will be needed to act as a 'filler' at the end of the bay. A bracket is available (Pt No 307C00025002) which bolts to the end of the RAft to support this part tile. However, installers should check with the flooring manufacturers as to whether extra pedestals are also required to maintain the integrity/warranty of the floor system.



### Installation

1. Determine where the cabinets are to be sited.
2. Remove the required number of tiles (which can be used elsewhere) to match the number of cabinets.  
Note: This can be done by removing the required number of tiles from a finished floor or omitting tiles whilst the floor is being laid. Alternatively, a floor under construction can have the required number of tiles lifted after that section of floor has been completed and those tiles can then be moved for use in the area being built.
3. Position each RAft 'frame' on the flooring pedestal heads such that the flange for attaching to the cabinet (the flat surface) is uppermost.
4. Bolt the frames together using 2 x M6 bolts and flanged nuts in the top pair of holes in the side of each frame.
5. Position the cabinets on the RAft and bolt together through the centre holes.
6. Fit clamps to the underside of the RAft by bolting through the outer positions.  
3 types of clamp are available:

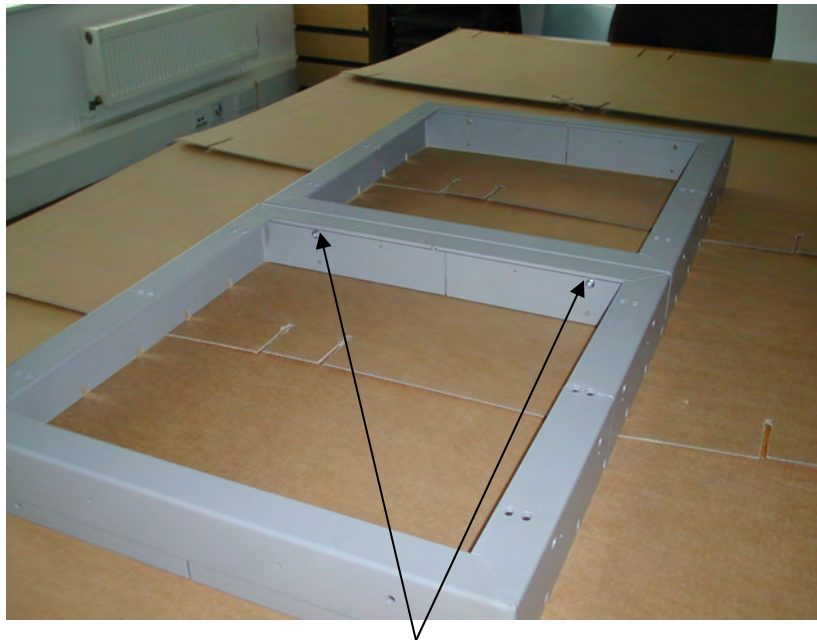
Type 1: Individual clamps (307C01200504) - for use with stringers – these hook under the stringers to prevent subsequent cabinet tipping. Four clamps per cabinet should be used, one in each corner, however, if the cabinets are securely bayed together it may be considered adequate to use one each at the front and rear. It is recommended that the end cabinets in a row, each have four clamps fitted.



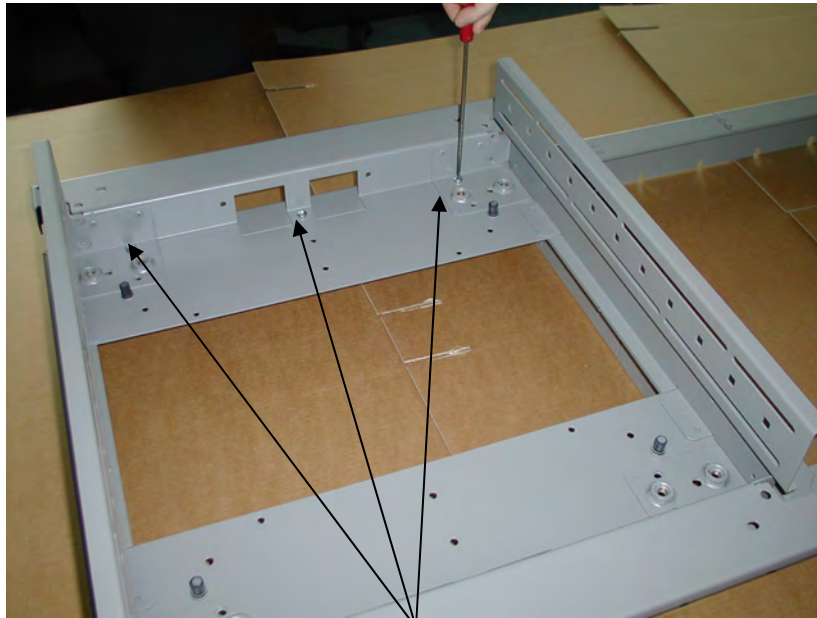
Type 2: Double side clamps (307C12126003) - for use where stringers are not present. These clamps are slotted for adjustment and clamp to the underside of the pedestal heads. Two clamps per cabinet should be used, one on each side, however, if the cabinets are securely bayed together it may be considered adequate to use one per cabinet. It is recommended that the end cabinets in a row, each have two clamps fitted, or at least the clamps should be to the 'outside' of these cabinets



Type 3: Single front & rear clamps (307C11180500) - for use where stringers are not present. These clamps are slotted for adjustment and clamp to the underside of the pedestal heads. Four clamps per cabinet should be used, one in each corner, however, if the cabinets are securely bayed together it may be considered adequate to use two per cabinet (one front & rear). It is recommended that the end cabinets in a row, each have four clamps fitted, or at least the clamps should be to the 'outside' of these cabinets.



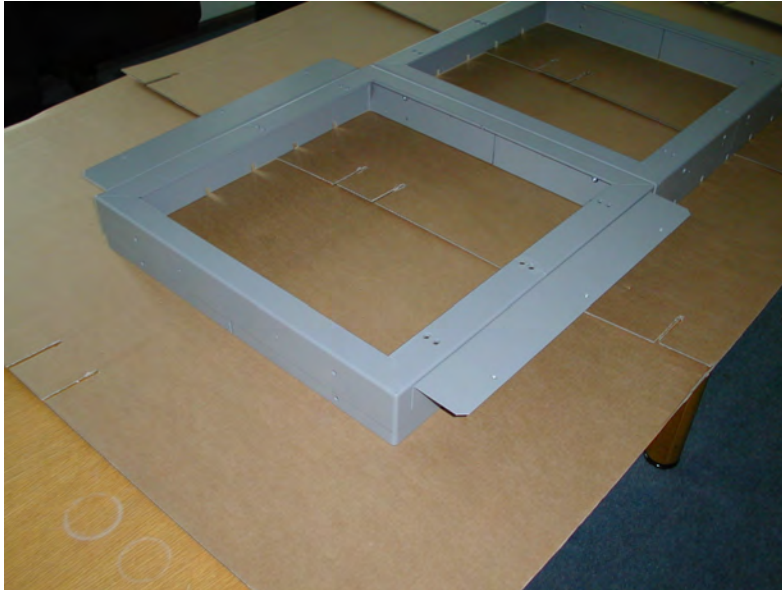
**Fit raft's together using M6 pozi pan head screws, M6 external washers & M6 flange nuts supplied.  
600, 700, & 800 deep racks fit directly to the raft as shown below**



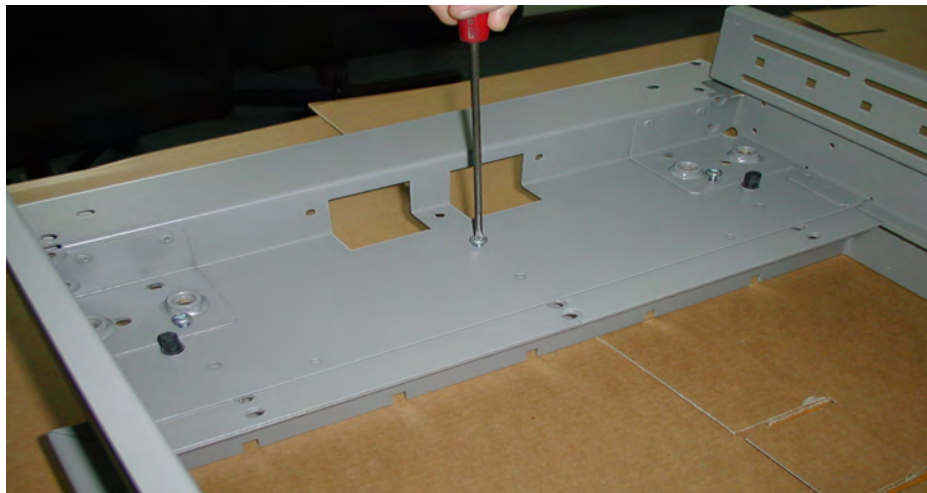
**Fit cabinet base to raft's in six positions (8 positions for 800w cabinet) using M6 pozi pan head screws, M6 external washers & M6 flange nuts supplied.**

**For 900 & 1000 deep cabinets use the raft fixing angles supplied Fitted to the front & rear of raft using M6x12mm long pozi pan head screws & M6 external washers into the rivet bush fitted to the fixing angle.**





**When fixing angles are fitted at both front & rear Fit cabinet base to raft fixing angles in six positions (8 positions for 800w cabinet) using M6 pozi pan head screws, M6 external washers & M6 flange nuts supplied.**





**Patented**