

STANDARD SPECIFICATION:

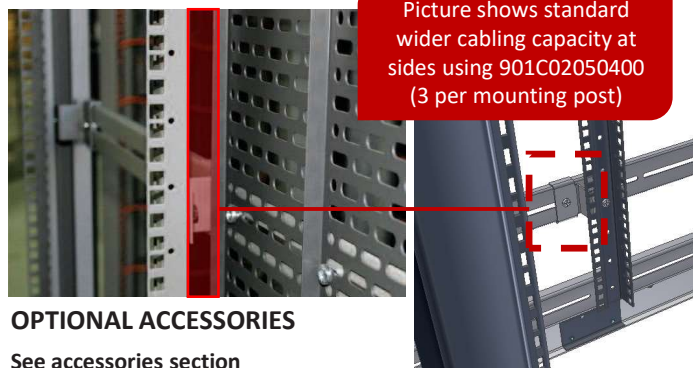
- Available in 42U and 47U heights 600mm wide
- 800mm, 900mm and 1000mm deep
- Front cover trims fitted with coloured Smart Trim.
- Base designed for maximum cable entry and ease of cabling to cable tray with a minimum of cable goose-necking
- Fitted with transit castors as standard
- 1000Kg static load rating & 450Kg dynamic load rating

FINISH:

- Standard 1: Powder painted Velvet Black to RAL 9005
- Standard 2: Powder painted Dusty Grey to RAL 7037

FEATURES:

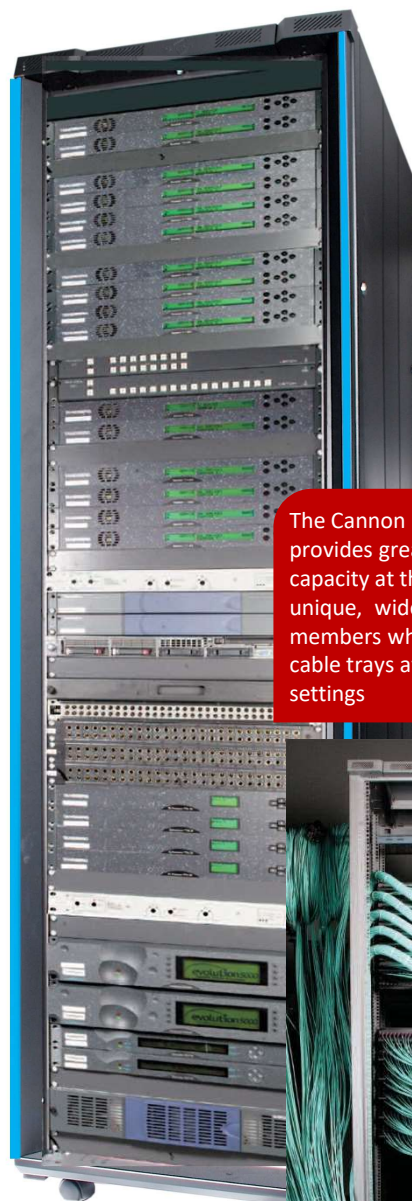
Set back depth members (panels mounting post supports) increase the cabling space on each side of the cabinet at rear by 28mm giving an extra 56mm space in the back of a 600mm wide cabinet.



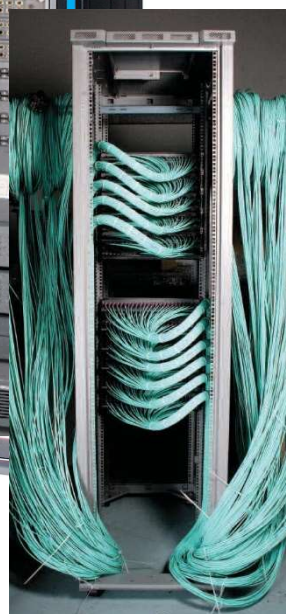
OPTIONAL ACCESSORIES

See accessories section

- Side panels
- Rear doors (glass, steel or perforated)
- RAfT System compatible - for raised floor installations
- Raceway System compatible - for overhead cabling
- Fan tray - various options available - **See Section 4.11**
- Baying kit - for standard or special side baffle panels
- Cable tray - from 50mm to 300mm widths
- Cabinet roof cable entry options – **See Section 5.1**



The Cannon Broadcasting Cabinet provides greatly enhanced cabling capacity at the sides due to unique, wider spaced depth members which position vertical cable trays at maximum width settings



Height	Width	Depth	Part No.
U	mm	mm	Order Code
42	600	800	CABC426080
42	600	900	CABC426090
42	600	1000	CABC426099
45	600	800	CABC456080
47	600	600	CABC476060
47	600	800	CABC476080
47	600	900	CABC476090
47	600	1000	CABC476099
47	800	800	CABC478080
47	800	1000	CABC478099

Size conversions: 1U = 44.45mm = 1 3/4" 600mm = 24" 700mm = 28" 800mm = 32" 1kg = 2.2lbs

T: +44(0)1425 632600 | CANNONTECH.CO.UK | SALES@CANNONTECH.CO.UK

Side Panels

- Side panels locate easily into the cabinet and lock by the means of two identical locks
- Same key used to unlock/lock door and side panels
- Standard side panel and baffle side panels available
- Cabinets are able to be bayed together with side panels attached

Standard Side Panel		
Height U	Depth mm	Part No. Order Code
42	800	217C00008042
	900	217C00009042
	1000	217C00009942
47	800	217C00008047
	900	217C00009047
	1000	217C00009947

Finish:

- Powder painted Velvet Black to RAL 9005

Supplied:

- Individually

Baffled Side Panel		
Height U	Depth mm	Part No. Order Code
42	800	218C02008042
	900	218C02009042
	1000	218C02009942
47	800	218C02008047
	900	218C02009047
	1000	218C02009947

Cabinet Joining/Baying Kit

- Cannon cabinet joining/baying kits offer a very simple solution where cabinets are required to be joined, or bayed together
- One joining kit will bay two cabinets together

Description	Part No. Order Code
For use with standard side panels	KP0236
For use with baffle side panels	KP0007

DOOR OPTIONS

- Cannon unique Smart Doors are removable and lockable.
- Equipped with sprung hinges for easy removal with hinging to the left or right-hand side of the cabinet.
- 180° opening when bayed, 270° opening as stand alone and at end of bay.
- Doors allow personnel to exit past a cabinet in any direction at front, side or rear with no obstruction and with minimal danger of snagging loose clothing.
- These requirements are critical, particularly in an emergency, i.e. in smoke filled rooms, even with wide gangways.

Vented frame glass door



Vented frame steel door



MaxiVent perforated door



Split MaxiVent perforated door



Split Door Lock



Height	Vented Frame Glass Rear Door	Vented Frame Steel Rear Door	Maxi Vent Perforated Rear Door	Split MaxiVent Perforated Door	*Split Door Lock Rod Kit including swing handle & standard barrel
	Part Code	Part Code	Part Code	Part Code	Part Code
42U	235B85600042	235B65600042	235B95600042	265B90600042	LC265-1-6042
47U	235B85600047	235B65600047	235B95600047	265B90600047	LC265-1-6047

Size conversions: 1U = 44.45mm = 1 3/4" 600mm = 24" 700mm = 28" 800mm = 32" 1kg = 2.2lbs