

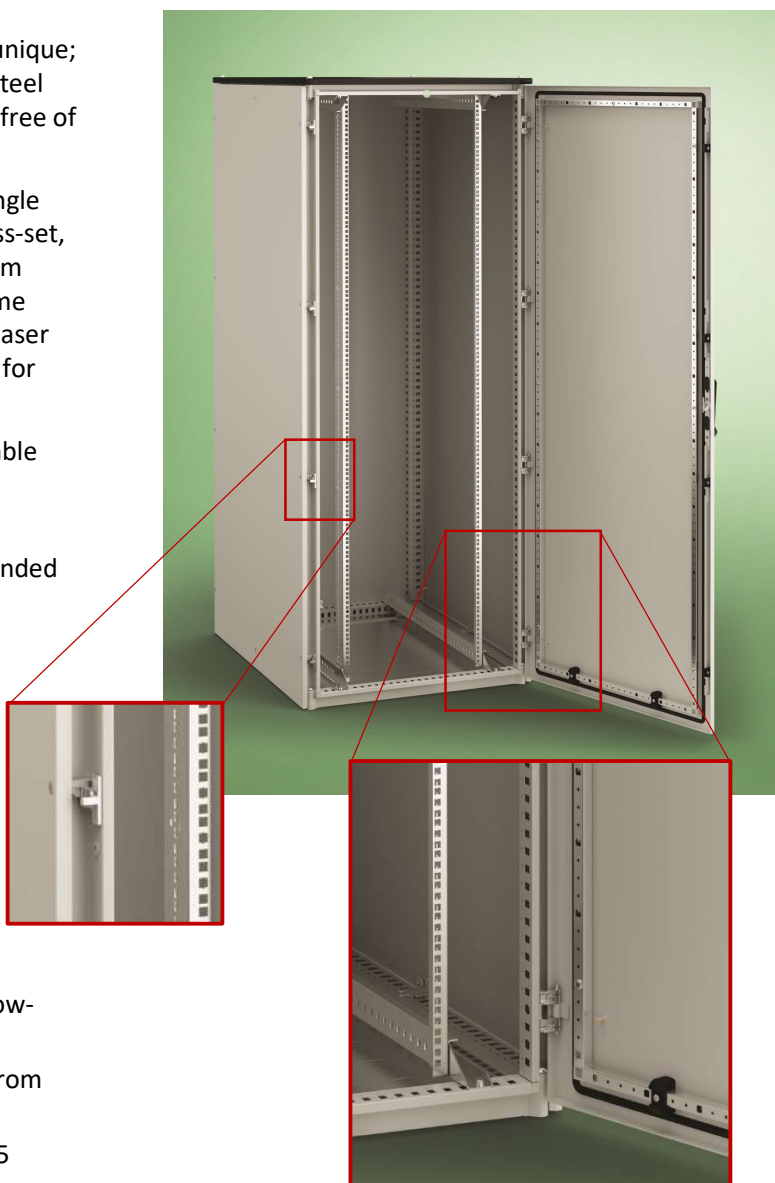
CHARACTERISTICS

The profiles used for uprights and crosspieces are unique; manufactured from high-strength low-alloy sheet steel (HSLA), secured with continuous laser welding and free of sharp edges.

The base and top sections are assembled from a single piece box-type structure, manufactured from press-set, laser-MIG hybrid welded profiles manufactured from high-strength low-alloy sheet steel (HSLA). The frame corners are manufactured with orthogonal joints, laser welded to vertical upright rails and horizontal rails for attachment to roof and base assemblies.

Just 8 high resistance screws are required to assemble the frame structure together, whilst being held in position by 2 pins, allowing ease of assembly.

Panels are manufactured from sheet steel with rounded folding for higher resistance.



COMPRISING

- Structure manufactured from high-strength low-alloy sheet steel (HSLA)
- Reversible blank or glazed door manufactured from sheet steel with stiffening frame, supplied with double-bar lever-operated locking system, 3 to 5 locking points and hinges
- Locking system with a unique lever mechanism, exclusive design and 3-point locking for H=1400 to 1600, 4-point locking for H=1800 to 2000 and 5-point locking for H=2200+
- Possible to mount different inserts and convenient lock release system of the slave door of the double door cabinet
- Reversible door with stiffening frame
- Sturdy panels for high structural stiffness
- Modular bottom cable entry with adjustable base plates and seal
- Removable roof panel
- Screwed rear panel
- 1 pair of front 19" rack profiles.

PAINT FINISH

Standard epoxy polyester powder coating.

- Structure: RAL 7035 smooth finish.
- Door and rear panel: RAL 7035 textured finish.
- Roof: RAL 9011 textured finish.

PROTECTION RATING

IP55 complying with EN60529.

- NEMA 12; complying with NEMA250.
- Degree of protection is delivered by the two component polyurethane foam seal.
- Impact resistance IK10 complies with EN62262.

Size conversions: 1U = 44.45mm = 1 3/4" 600mm = 24" 700mm = 28" 800mm = 32" 1kg = 2.2lbs

ORDER CODES					
Height U	Width mm	Height mm	Depth mm	With Plain Door	With Glazed Door
24	600	1200	600	APRO061206PR	APRO061206PV
33	600	1600	600	APRO061606PR	APRO061606PV
38	600	1800	600	APRO061806PR	APRO061806PV
42	600	2000	600	APRO062006PR	APRO062006PV
47	600	2200	600	APRO062206PR	APRO062206PV
24	600	1200	800	APRO061208PR	APRO061208PV
33	600	1600	800	APRO061608PR	APRO061608PV
38	600	1800	800	APRO061808PR	APRO061808PV
42	600	2000	800	APRO062008PR	APRO062008PV
47	600	2200	800	APRO062208PR	APRO062208PV
24	600	1200	1000	APRO061210PR	APRO061210PV
33	600	1600	1000	APRO061610PR	APRO061610PV
38	600	1800	1000	APRO061810PR	APRO061810PV
42	600	2000	1000	APRO062010PR	APRO062010PV
47	600	2200	1000	APRO062210PR	APRO062210PV
24	800	1200	600	APRO081206PR	APRO081206PV
33	800	1600	600	APRO081606PR	APRO081606PV
38	800	1800	600	APRO081806PR	APRO081806PV
42	800	2000	600	APRO082006PR	APRO082006PV
47	800	2200	600	APRO082206PR	APRO082206PV
24	800	1200	800	APRO081208PR	APRO081208PV
33	800	1600	800	APRO081608PR	APRO081608PV
38	800	1800	800	APRO081808PR	APRO081808PV
42	800	2000	800	APRO082008PR	APRO082008PV
47	800	2200	800	APRO082208PR	APRO082208PV
24	800	1200	1000	APRO081210PR	APRO081210PV
33	800	1600	1000	APRO081610PR	APRO081610PV
38	800	1800	1000	APRO081810PR	APRO081810PV
42	800	2000	1000	APRO082010PR	APRO082010PV
47	800	2200	1000	APRO082210PR	APRO082210PV
42	800	2000	1200	APRO082012PR	APRO082012PV
47	800	2200	1200	APRO082212PR	APRO082212PV

Notes:

- Further dimensions available on request.
- Side panels APFI to be ordered separately



MATERIALS AND FINISH:

- Zinc sheet steel
- Supplied in pairs

ORDER CODES	
HEIGHT U	19" RACK RAILS (PAIR)
24	AEMK241200
33	AEMK331600
38	AEMK381800
42	AEMK422000
47	AEMK472200



"L-SHAPED" 19" RAILS

- Manufactured from zinc sheet steel.
- Supply includes: 2 pieces.

ORDER CODES	
Height U	19" L-Rack Rails (Pair)
24	AERL241200
33	AERL331600
38	AERL381800
42	AERL422000
47	AERL472200



DEPTH RAILS

- Rails for the mounting of 19" rack uprights on ABACUS PRO IP55 cabinet W=800mm.
- Manufactured from zinc sheet steel.
- Supply includes: 4 pieces

DEPTH	PART CODE
600	AEP0094
800	AEP0095
1000	AEP0096
1200	AEP0097



BRACKETS

PART CODE: AEP0070

- Brackets manufactured from zinc sheet steel, used for the mounting of 19" uprights on cabinets W=600mm.
- Supply includes: 4 pieces



WHEELS

PART CODE: AERU-001

- High-quality polyamide wheels
- Load capacity: 80kg/wheel
- Supply includes: 4 pieces
- (2 wheels with brake and 2 rotating wheels)



LEVELLING FEET

PART CODE: AEPX-001

- Manufactured from PVC with screws made from zinc steel.
- Supply includes: 4 pieces with mounting accessories



EYEBOLTS

PART COD: WTGS-001

- M12 eyebolts
- Manufactured from zinc passivated steel.
- Supply includes: 4 pieces .



POWER DISTRIBUTION BOX

PART CODE: AEP0600

- Enclosure manufactured from mild steel designed for the assembly of components and modular equipments.
- Consisting of a fixed part including DIN rail and a shell with adjustable opening.

CHARACTERISTICS

- Suitable for nr. 4 pre-punched cable entry.
- Box dimensions: height 3U
- Colour: RAL7035



IP55 SIDE PANELS

- Manufactured from sheet steel
- Assembled with screws.
- Paint finish: Standard epoxy polyester powder coating.
- Colour: RAL7035 textured finish.
- Supply includes: 1 pair with mounting accessories.

HEIGHT U	DEPTH	PART CODE
24	600	APFI060120M
33	600	APFI060160M
38	600	APFI060180M
42	600	APFI060200M
47	600	APFI060220M
24	800	APFI080120M
33	800	APFI080160M
38	800	APFI080180M
42	800	APFI080200M
47	800	APFI080220M
24	1000	APFI100120M
33	1000	APFI100160M
38	1000	APFI100180M
42	1000	APFI100200M
47	1000	APFI100220M
24	1200	APFI120120M
33	1200	APFI120160M
38	1200	APFI120180M
42	1200	APFI120200M
47	1200	APFI120220M



MODULAR PLINTH APZE

- Modular plinth consisting of corner pieces and side/front cross/lateral pieces
- Manufactured from sheet steel.
- Paint finish: Standard epoxy polyester powder coating.
- Colour: RAL9011 textured finish.
- Supply includes: corner pieces (4 pieces) with PVC front cover caps and mounting accessories, Front cross/lateral pieces (2 pieces/kit).

FLAT PACKED	ASSEMBLED	DESCRIPTION
APZE-A100	APZE-A100M	100mm HIGH CORNER PIECES (4 PCS)
APZE-A200	APZE-A200M	200mm HIGH CORNER PIECES (4 PCS)
APZE-T0600	APZE-T0600M	600mm W x 100mm H - CROSS/LATERAL SIDE PANELS (2 PCS)
APZE-T0800	APZE-T0800M	800mm W x 100mm H - CROSS/LATERAL SIDE PANELS (2 PCS)
APZE-T1000	APZE-T1000M	1000mm W x 100mm H - CROSS/LATERAL SIDE PANELS (2 PCS)
APZE-T1200	APZE-T1200M	1200mm W x 100mm H - CROSS/LATERAL SIDE PANELS (2 PCS)
APZE-T0600D	APZE-T0600DM	600mm W x 200mm H - CROSS/LATERAL SIDE PANELS (2 PCS)
APZE-T0800D	APZE-T0800DM	800mm W x 200mm H - CROSS/LATERAL SIDE PANELS (2 PCS)
APZE-T1000D	APZE-T1000DM	1000mm W x 200mm H - CROSS/LATERAL SIDE PANELS (2 PCS)
APZE-T1200D	APZE-T1200DM	1200mm W x 200mm H - CROSS/LATERAL SIDE PANELS (2 PCS)

Size conversions: 1U = 44.45mm = 1 3/4" 600mm = 24" 700mm = 28" 800mm = 32" 1kg = 2.2lbs



HANDLES

- Further to our standard locking system, we offer a wide range of handles with:
 - key-lock insert
 - pad-locking option
 - push-button release or special inserts.
- Please contact CANNON for further details.

PART CODE	IMAGE	DESCRIPTION
WE520		INSERT Ø 3 MM
WE522		KEY Ø 3 MM
WE530		INSERT Ø 5 MM
WE532		KEY Ø 5 MM
WE540		INSERT □ 7 MM
WE542		KEY □ 7 MM
WE550		INSERT Δ 7 MM
WE552		KEY Δ 7 MM
WE560		INSERT Δ 8 MM
WE562		KEY Δ 8 MM
WE570		FIAT INSERT
WE572		FIAT KEY



GROUNDING CABLES

PART CODE: AEP0121

- Yellow/green grounding cables section 6mm²
- Length 150mm
- Complete with ring lugs Ø5mm.
- Supply includes: 10 pieces/kit

IP55 THERMAL MANAGEMENT OPTIONS

AIR-CONDITIONED UNIT CABINET

If specific environments or air-conditioned data rooms are not available for your application, then the temperature developed from the server/equipment installed within the rack might be so high that a suitable cooling method will be required.

Several solutions are available including airconditioned units, Filtered Forced ambient air (Positive/Negative), Heat Exchanger, Peltier Thermo Electric Device.

The most proper solution utilises a packaged DX ACU: the IP55 protection rating of the ABACUS PRO Cabinet guarantees the best working conditions for the air conditioner.

ACU's are available from 400W to 4000W of cooling capacity and can be supplied in both side/door-mounting and roof-mounting versions – thus to ensure the optimal cooling of your servers.



THERMAL MANAGEMENT OPTIONS:

THERMOSTATS, HEATERS, FILTER/FILTER FANS

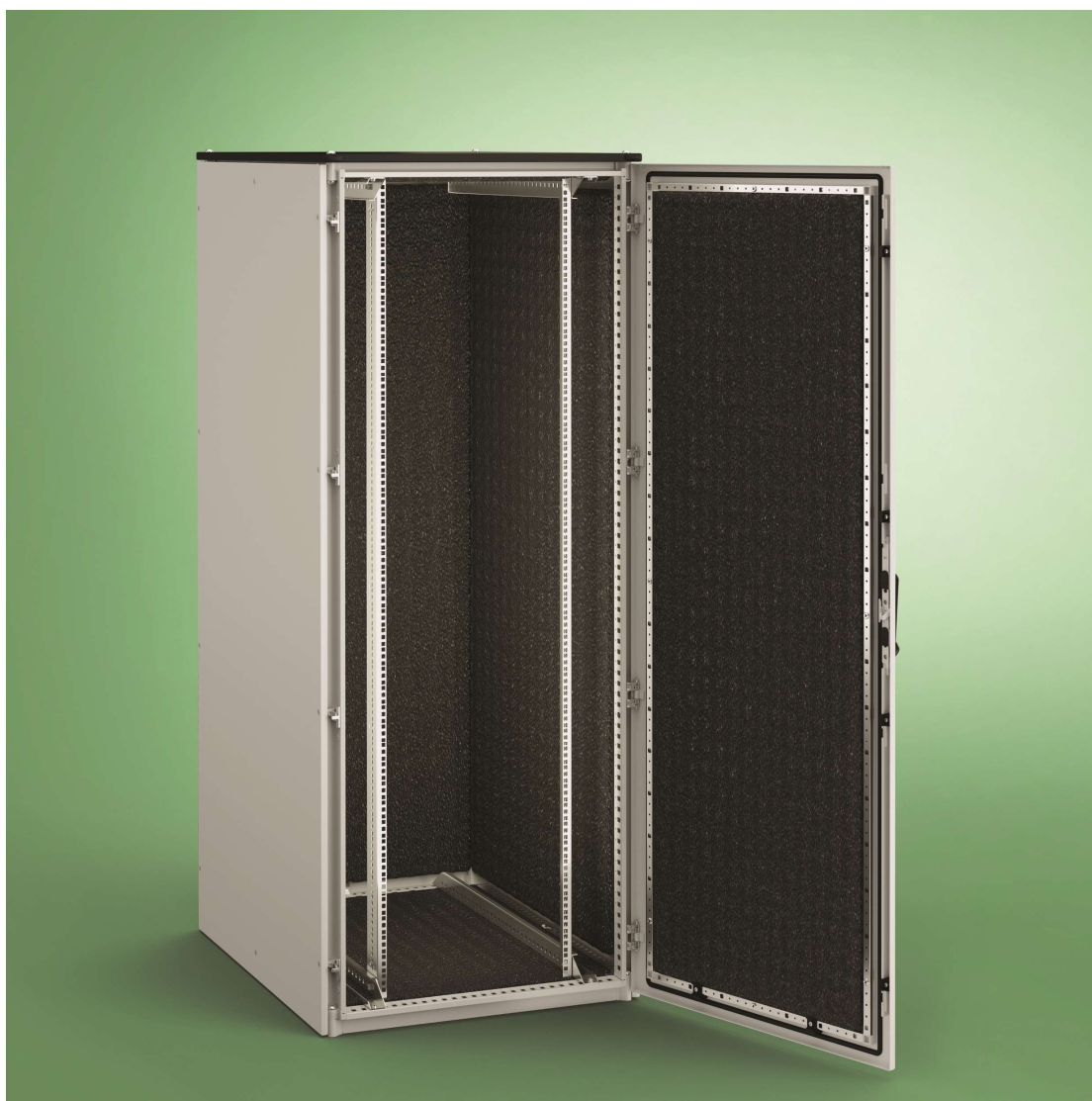
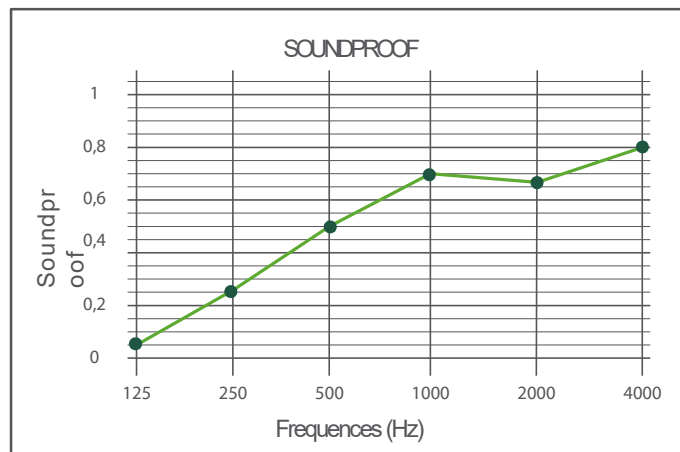
- Please contact CANNON to discuss your thermal management requirements.
- CANNON can assist with calculating the size of ACU, Heater, Fan(s) etc. required.

ABACUS PRO SOUNDPROOF CABINET

The increasing density of servers and equipment has led to immense difficulties in heat and noise management, especially when the server cabinet is installed within a work/office environment; where safety regulations limit the acoustic noise level itself.

CANNON can solve your problem by manufacturing soundproof cabinets based on the ABACUS PRO concept - which is already offering as standard a degree of protection from noise – this can be strengthened further by adding an appropriate soundproofing kit.

If required, the rack cabinet can be also ventilated or cooled by using specific low-noise fans.



Size conversions: 1U = 44.45mm = 1 3/4" 600mm = 24" 700mm = 28" 800mm = 32" 1kg = 2.2lbs

T: +44(0)1425 632600 | CANNONTECH.CO.UK | SALES@CANNONTECH.CO.UK