

CABLE RACEWAY

Cabinet Roof Mounted Cable Raceway dramatically reduces installation cost.

The Cannon Cable Raceway can be mounted onto the roof area of any Cannon SMART cabinet or Patching Frame by matching the cabinet width. Cannon Raceway will connect to any number of racks or cabinets.

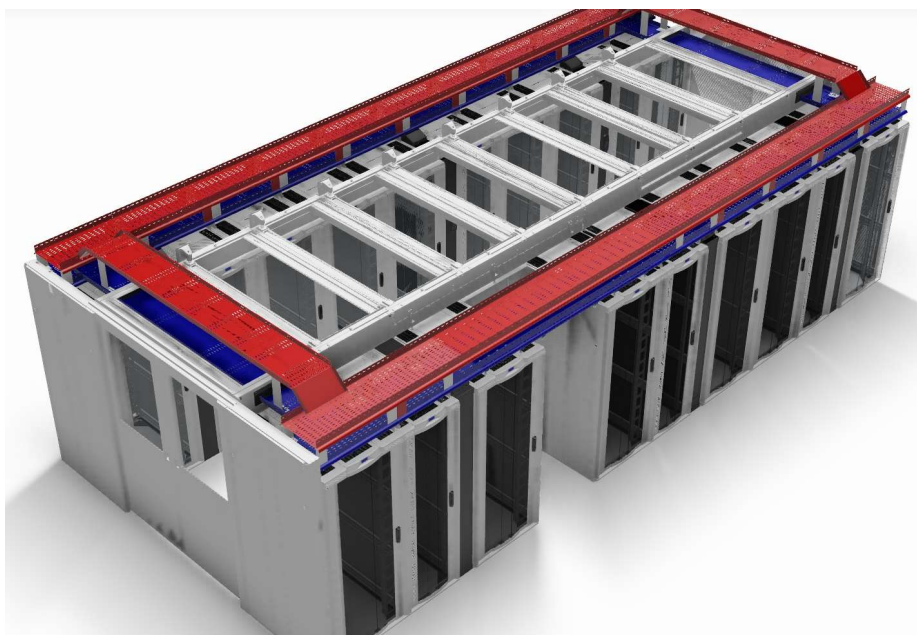
Single or multi-tier options

Features & Benefits

This cable tray system:

- Modular.
- No high ladder work is required to install cable routing raceway.
- Avoids the need for ceiling fixtures.
- Reduces installation time.
- Dramatically reduces overall cost.
- Avoids landlord constraints due to ceiling damage.
- Provides more scope for changes in room layout.
- Enables easy cable entry through rack roof and facilitates cable separation.
- Provides bend radius control into the rack.
- Supplied in rack sets, or pre-fitted Gangway Bridge Unit. raceway

- In-line raceway links.
- Raceway will divide into separate sections to accommodate both copper and fibre cable.
- All Cable Raceways support a cable load of 100kg evenly distributed, per meter of cable raceway.
- Cannon Cable Raceway is supplied in sets which exactly match cabinet widths.
- As the raceway and cabinet are connected they can easily be moved together, providing a high degree of flexibility and considerable time saving.
- For more cabling capacity or separation use multiple raceways in one system.
- Brackets position raceway above the cabinet roof and allow one tier, two tier or three tier cable runs.
- In addition parallel sets of tiers can be installed.
- Cannon Cable Raceway does not interfere with the maintenance of roof mounted fan trays.
- Adjustable cable-retention plates allow any selection of cable exit position along the length of cable raceway, substantially easing cabling drop down.



SINGLE PARALLEL RACEWAY

Medium capacity single raceways attached to the cabinet roof, above the cabinet cable entry positions.

- Options of 100mm deep mounted 150mm & 400mm deep mounted 100mm (285mm option see below) above cabinet roof
- 100mm, 200mm, 250mm, 300mm & 400mm deep supplied as single raceway:
- One cable raceway
- Two cable retention plates

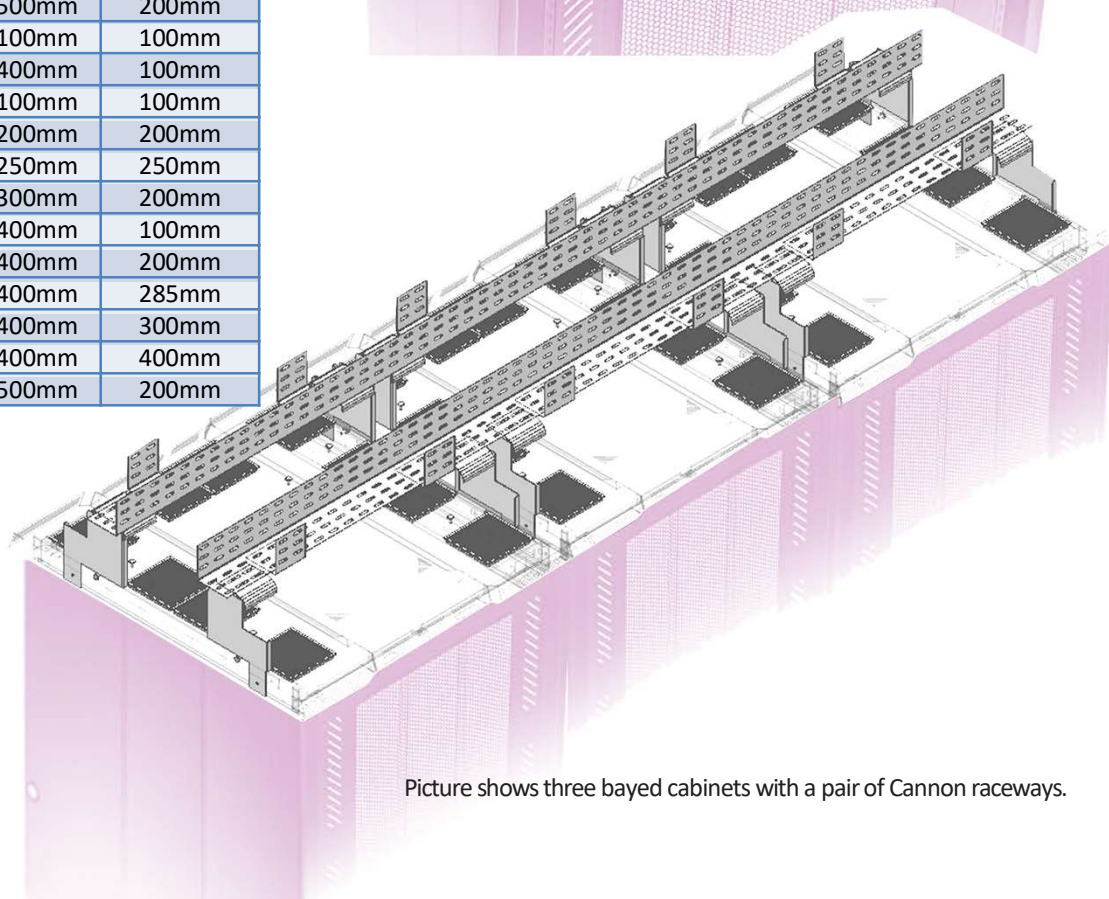
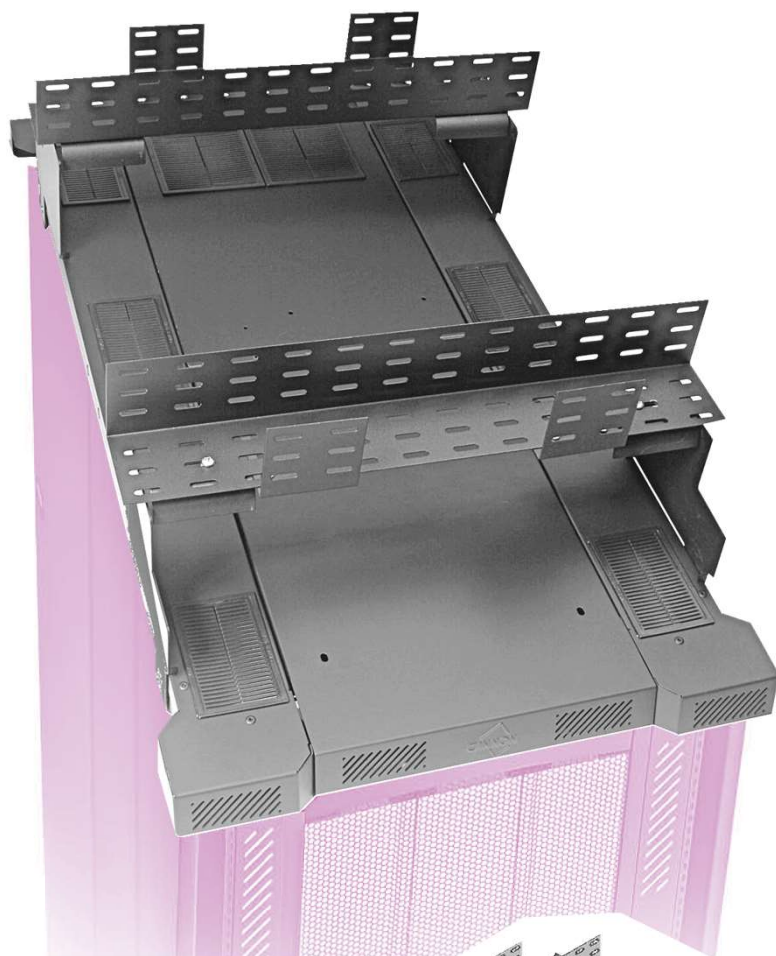
Also available as a pair.

Finish Standard: Powder painted Velvet Black to RAL 9005 or Chameleon (Grey White) to RAL 9002.

Additional colours available on request.

Optional - earth bonding kit.

CABINET WIDTH	PART CODE	RACEWAY WIDTH	MOUNTING HEIGHT
600mm	935B02600100	100mm	100mm
600mm	935B10602000	200mm	100mm
600mm	935B10602500	250mm	250mm
600mm	935B20603000	300mm	200mm
600mm	935B01604000	400mm	100mm
600mm	935B21604000	400mm	200mm
600mm	935B20605000	500mm	200mm
700mm	935B02700100	100mm	100mm
700mm	935B01704000	400mm	100mm
800mm	935B02800100	100mm	100mm
800mm	935B20802000	200mm	200mm
800mm	935B25802500	250mm	250mm
800mm	935B20803000	300mm	200mm
800mm	935B01804000	400mm	100mm
800mm	935B21804000	400mm	200mm
800mm	935B03804000	400mm	285mm
800mm	935B30804000	400mm	300mm
800mm	935B40804000	400mm	400mm
800mm	935B20805000	500mm	200mm



Picture shows three bayed cabinets with a pair of Cannon raceways.

STEPPED DOUBLE RACEWAY

(Suitable for **1000mm/1200mm deep** cabinets).

Large capacity stepped double raceways allow cross bridging between raceways, additional capacity and separation of cabling (Fibre/Copper/Power).

Comprises two cable raceways attached to the cabinet roof above the cabinet cable entry positions.

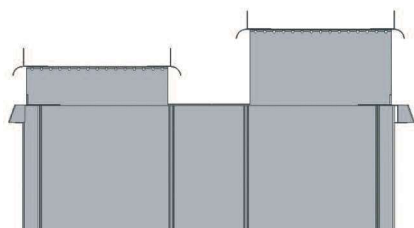
- One: 400mm deep, mounted 100mm above cabinet roof
- One: 400mm deep mounted 200mm above cabinet roof
- *Additional sizes available on request*

Optional earth bonding

Supplied: 2 x 400mm deep cable channels, 2 x stepped side mounting panels plus fixings.

Finish

Standard: Powder painted Velvet Black to RAL 9005 or Chameleon (Grey White) to RAL 9002.
Other colours available on request.



Side view.

TO SUIT CABINET FOOTPRINT (W X D)	PART CODE
600mm x 1000mm	935B04609900
700mm x 1000mm	935B04709900
800mm x 1000mm	935B04809900
600mm x 1200mm	935B04601200
800mm x 1200mm	935B04801200

STEPPED DOUBLE RACEWAY

(To suit **800mm deep** cabinets).

Large capacity stepped double raceways allow cross bridging between raceways, additional capacity and separation of cabling (Fibre/Copper/Power).

Comprises two cable raceways attached to the cabinet roof above the cabinet cable entry positions.

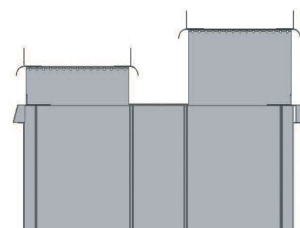
- One: 300mm deep, mounted 100mm above cabinet roof
- One: 300mm deep mounted 200mm above cabinet roof
- *Additional sizes available on request*

Optional earth bonding

Supplied: 2 x 300mm deep cable channels, 2 x stepped side mounting panels plus fixings.

Finish

Standard: Powder painted Velvet Black to RAL 9005 or Chameleon (Grey White) to RAL 9002.
Additional colours available on request.



Side view.

TO SUIT CABINET FOOTPRINT (W X D)	PART CODE
600mm x 800mm	935B03608000
800mm x 800mm	935B03808000

LEVEL DOUBLE RACEWAY

(To suit **1000/1200mm deep** cabinets).

Large capacity level double raceways allow cross bridging between raceways, additional capacity and separation of cabling (Fibre/Copper/Power).

Comprises two cable raceways attached to the cabinet roof above the cabinet cable entry positions.

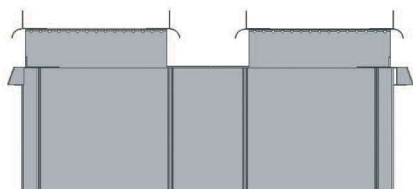
- One: 350mm deep, mounted 100mm above cabinet roof.
- One: 350mm deep mounted 100mm above cabinet roof.
- *Additional sizes available on request.*

Optional earth bonding

Supplied: 2 x 350mm deep cable channels, 2 x level side mounting panels plus fixings.

Finish

Standard: Powder painted Velvet Black to RAL 9005 or Chameleon (Grey White) to RAL 9002.
Additional colours available on request.



Side view.

TO SUIT CABINET FOOTPRINT (W X D)	PART CODE
600mm x 1000mm	935B02609900
700mm x 1000mm	935B02709900
800mm x 1000mm	935B02809900

TWO-TIER RACEWAY

Large capacity Two-Tier Raceway comprises two cable raceways attached to the cabinet roof above the cabinet cable entry positions.

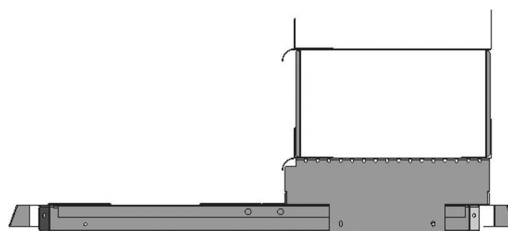
- First tier: 400mm deep, mounted 100mm above cabinet roof
- Second tier: 400mm deep mounted 250mm above cabinet roof

Optional earth bonding

Supplied: 2 x 400mm deep cable channels, complete two-tier section spanning width of cabinet plus fixings.

Finish

Standard: Powder painted Velvet Black to RAL 9005 or Chameleon (Grey White) to RAL 9002.
Other colours available on request.



Side view.

TO SUIT CABINET FOOTPRINT (WIDTH)	PART CODE	MOUNTING POSITION
600mm	935B42604500	FRONT/REAR
700mm	935B42704500	FRONT/REAR
800mm	935B42804500	FRONT/REAR
800mm	935B48804500	CENTRALLY
Please note: End of the bay require additional brackets (2-off per bay).		
END BAY BRACKETS	PART CODE: 053C05100600	