

QUICK-FIT 19-INCH PLASTIC BLANKING PANELS

Cannon Quick-Fit 19-inch Plastic blank panels are supplied in **packs of 10** with MiKey Buttons.

Available in 1U & 3U versions.

Material: KP0330 KITS - Black Polypropylene UL94V-0.

DESCRIPTION	PART CODE	NOTES
1U	KP0330-1U	KIT OF 10 x 1U PANELS
3U	KP0330-3U	KIT OF 10 x 3U PANELS
25U	KP0330-25U	KIT OF 10 x 1U & 5 x 3U PANELS
42U	GP504	COREX BLANKING SHEET
45U	GP505	COREX BLANKING SHEET
47U	GP502	COREX BLANKING SHEET
52U	GP503	COREX BLANKING SHEET



19-INCH BRUSH STRIP PANEL

Cannon 1U Brush Strip Cable Entry Panels fit directly onto the 19-inch equipment mounting posts of Cannon cabinets.

The panels are 1U to 3U high and have been designed to provide a convenient and tidy alternative to horizontal cable management when an excess of cable might be involved, or where cables need to be routed to the rear of equipment.

Slots (where applicable) have been incorporated in the 100mm deep rearward facing support tray for cable fastening purposes. The brush strip gives a neat and tidy appearance to the finished configuration and reduces the ingress of dust.

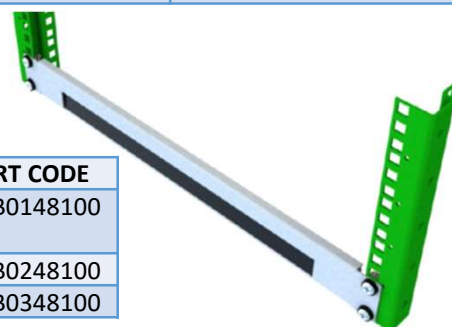
Finish: Standard: Powder painted Velvet Black to RAL 9005 or Chameleon (Grey White) to RAL 9002.

Additional colours available on request.



DESCRIPTION	PART CODE
1U 19" BRUSH STRIP PANEL	395B01601002
2U 19" BRUSH STRIP PANEL	395B02481000
3U 19" BRUSH STRIP PANEL	395B03481000

DESCRIPTION	PART CODE
1U 19" BRUSH STRIP FLAT PANEL	395B0148100
2U	395B0248100
3U	395B0348100



19-INCH BLANKING/VENTED PANELS

Cannon front panels are plain or vented as required and are provided with standard 19-inch fixing holes.

Material & Finish: 1.5mm steel, Powder painted Velvet Black to RAL 9005 or Chameleon (Grey White) to RAL 9002. Other colours available on request.



SIZE	BLANKING PANEL	VENTED PANEL
1U	166C01600000	167C01600000
2U	166C02600000	167C02600000
3U	166C03600000	167C03600000
4U	166C04600000	167C04600000
5U	166C05600000	167C05600000
6U	166C06600000	167C06600000
7U	166C07600000	167C07600000
8U	166C08600000	167C08600000
9U	166C09600000	167C09600000
10U	166C10600000	167C10600000
11U	166C11600000	167C11600000
12U	166C12600000	167C12600000
14U	166C14600000	-
23U	166C23600000	-

CAGE NUT INSERTION/EXTRACTION TOOL

- Simple and easy to use, this aids the insertion or extraction of cage nuts from the Cannon mounting posts.



DESCRIPTION	PART CODE
CAGE NUT TOOL	CA021

CABINET JOINING/BAYING KIT

- Cannon cabinet joining kits offer a very simple solution where cabinets are required to be joined, or bayed together
- One joining kit will bay two cabinets together.



DESCRIPTION	PART CODE
JOINING/BAYING KIT	KP0236

CASTORS

Cannon castors are easily fitted to the base of any Cannon cabinet. Medium duty castors are supplied in a choice of two weight carrying capacities, either lockable or non-lockable. It is recommended that two of the castors in a set of four are lockable and that these should be fitted at the front of the cabinet.

Supplied: Individually with fixings.

DESCRIPTION	DYNAMIC MAX. LOAD EACH	PART CODE
NON-LOCKING, LIGHTWEIGHT	50KG	CA003
LOCKING, LIGHTWEIGHT	50KG	CA004
NON-LOCKING, MEDIUM DUTY	75KG	CA001
LOCKING, MEDIUM DUTY	75KG	CA002
NON-LOCKING HEAVY DUTY	100KG	CA005
LOCKING HEAVY DUTY	100KG	CA006
NON-LOCKING EXTRA HEAVY DUTY	160KG	CA029
PACKER PLATE REQUIRED FOR EACH EXTRA HEAVY DUTY CASTOR	-	901C00080800
HD XT CASTOR SWIVEL	200KG	CA098
HD XT CASTOR FIXED	200KG	CA099

Please note that all cabinets are normally supplied with light duty castors (not shown here).



Non-locking medium duty castors
Castor height 70mm.



Locking medium duty castors
Castor height 70mm.



Non-locking heavy duty castors
Castor height 70mm.

***On 1200mm deep cabinets you will require 6 castors**

ADJUSTABLE FEET/SCREW JACKS



50mm diameter foot

Cannon adjustable jacking feet fit easily into the base of any Cannon cabinet to allow the leveling of cabinets on uneven surfaces.

- Thread size M10 x 35mm
- Supplied individually.

DESCRIPTION	MAX. LOAD EACH	PART CODE
SCREW JACKS 50mm	500KG	CA010

Cannon 25mm Adjustable Screw Jacks are for use with the castors. These screw jacks when fully retracted, allow castors to pivot 360°.

- Supplied individually.



25mm diameter feet

DESCRIPTION	MAX. LOAD EACH	PART CODE
SCREW JACKS M10 x 70mm	500KG	CA011
SCREW JACKS M10 x 100mm	500KG	CA018

Size conversions: 1U = 44.45mm = 1 3/4" 600mm = 24" 700mm = 28" 800mm = 32" 1kg = 2.2lbs

T: +44(0)1425 632600 | CANNONTECH.CO.UK | SALES@CANNONTECH.CO.UK

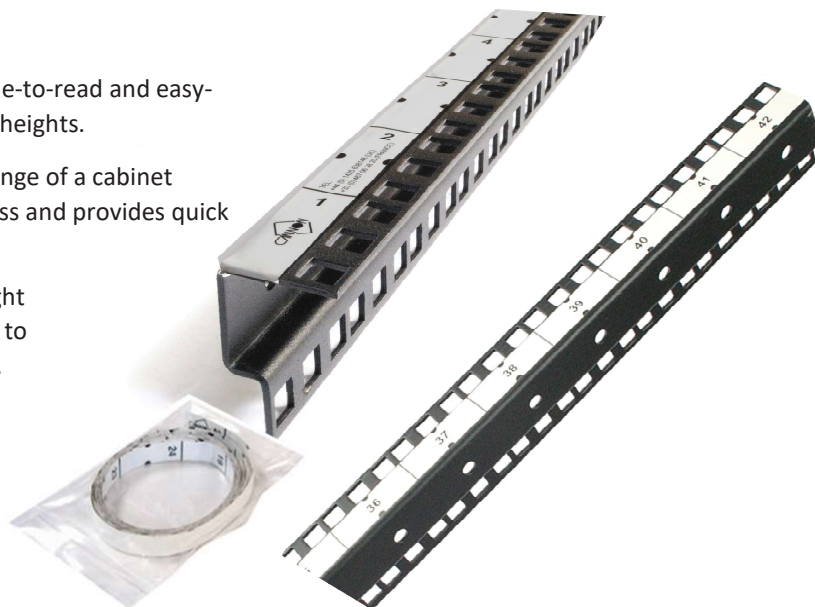
'U' HEIGHT IDENTIFICATION LABELS

Cannon 'U' height identification labels offer a simple-to-read and easy-to-fix identification system for all standard cabinet heights.

The self-adhesive strip is designed to fit the side flange of a cabinet mounting post where it is discrete but easy to access and provides quick and easy equipment positioning.

The identification strip offers standard cabinet height breaks, 'U' height position markers and may be cut to suit any height of cabinet up to a maximum of 48U.

DESCRIPTION	PART CODE
U HEIGHT LABEL	LA0050



RETRACTABLE STABILISER

This optional stabiliser is easily retro-fittable to the cabinet base and provides a degree of protection against tipping for free standing cabinets, sited directly on the floor.

Finish: Standard: Powder painted Velvet Black to RAL 9005 or Chameleon (Grey White) to RAL 9002.

Additional colours available on request.

CABINET FOOTPRINT	PART CODE
600mm x 600mm	365B50606000
600mm x 800mm	365B50608000
600mm x 900mm	365B50609000
600mm x 1000mm	365B50609900
600mm x 1200mm	365B50601200
800mm x 600mm	365B50806000
800mm x 800mm	365B50808000
800mm x 1000mm	365B50809900
800mm x 1200mm	365B50801200

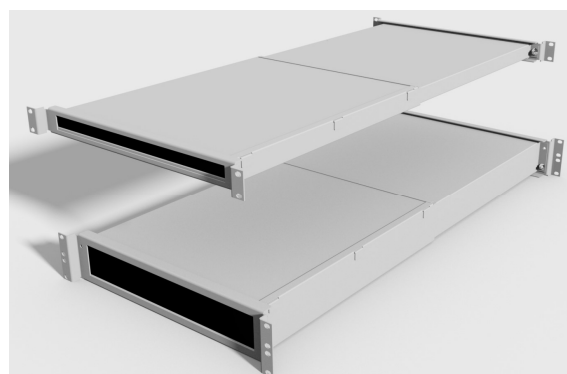


TELESCOPIC CABLE TROUGH.

Cannon telescopic cable trough fits directly to front and rear 19in ch mounting posts and allow:

- Cable management between the front and rear of installed equipment within the 19" area.
- Seal front air path to provide efficient cooling of equipment
- Telescopic size: 550mm to 1000mm

DESCRIPTION	PART CODE
1U 19" 550 to 1000mm CABLE TROUGH WITH FRONT BRUSH STRIP	925B01609900
2U 19" 550 to 1000mm CABLE TROUGH WITH FRONT BRUSH STRIP	925B02609900



Materials & Finish: Powder coated MS & Nylon Brush.
Supplied: Individually with fixings.

LIFTING EYES

Cannon lifting eyes for use when cabinets are required to be lifted into position; lifting eyes affix to the top of the cabinet - two on each side.

Must be fitted with the side panels removed.

Supplied: In set of four with fixings - can be factory fitted on request.

Finish: Standard: Powder painted Velvet Black to RAL 9005 or Chameleon (Grey White) to RAL 9002.

Additional colours available on request.

Recommended total lifting load: 500kg.



DESCRIPTION	PART CODE
SET OF 4 LIFTING EYES	KP0010

TRANS-SHIPMENT BASE

- Standard size Euro pallets to allow safe and easy fork-lift and movement of cabinets, particularly when being transhipped.
- Height of Trans-shipment base: 140mm.
- Secured by bolting cabinet base directly to pallet through each of the four corners.
- Pallet size: 800mm x 1200mm.

Two options available

- Pallet only.
- Pallet plus export packaging.

DESCRIPTION	PART CODE
PALLET PLUS EXPORT PACKAGING	PA07057
PALLET ONLY	PA07057A

