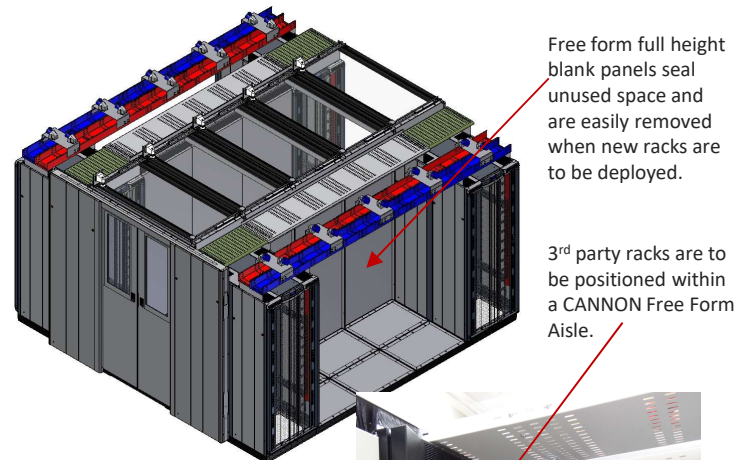


FREE FORM AISLE COCOONING

- Free form Aisle Cocooning Containment enables an installed Rack to be removed from a row of Racks, quickly and easily, within a few minutes.
- 3rd Party Racks or OEM equipment Racks can also be installed or removed from the row, allowing extreme versatility. CANNON Aisle Cocooning Containment features and benefits continue to be maintained.
- There is no disturbance to the Aisle Cocooning Containment infrastructure as it remains in place and operational.
- All rack mounted cable raceway also remains undisturbed and replacement Racks can be introduced into the row with similar ease.
- Achieves cost effective airflow and cabling containment in one cohesive system.



Complete Free Form Aisle Design Principles

■ **End to end edge beam:**

The edge beam which supports the overhead Cocooning Containment panels above the Aisle is a full “end to end” beam, not individually dedicated to any one Rack. It is substantially fixed at each end to the Aisle end frame and Aisle end rack.

■ **Moveable, intermediate support jacks:**

To adjust the edge beam, taking out any slight downward deflection, simple small support jacks can be positioned anywhere along the edge beam.

Small support jacks can be positioned wherever a convenient surface exists, on a rack roof, easily fitting in clear space between glands, vents etc.

■ **Jack removal/replacement**

Intermediate support jacks can be quickly disengaged to allow removal of the required Racks.

The stiff edge beam design enables the support beam to span vacant Rack-pockets. Full height panels provisionally close off vacant Rack pockets until Racks are introduced.

■ **Spanning, rack mounted cable raceway**

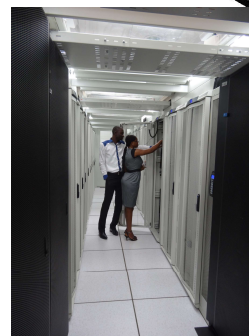
The Cannon cable raceway is designed to span vacant Rack-pockets and ensure continued cabling when vacant rack space is blanked off.

■ **Vertical closure panels**

Adjustable closure panel(s) cover and seal the small vertical space between the edge beam and the installed Rack roof.

■ **Extended vertical closure panels**

Where an installation is fed with down flow cold air from the ceiling, vertical closure panels can be of a type which extend upwards to meet and seal the ceiling. This option provided separation of the Cold Aisle & Hot Aisle air flow.



■ **All Cannon Aisle Cocooning virtues are retained**

All of the usual Active or Passive Aisle Cocooning Containment features are maintained with the Cannon Free Form Aisle Cocooning system.

■ **Aisle upgrade of old installations**

Where old Rack installations exist, even with mixed Rack types and sizes the Cannon Free Form Aisle Cocooning Containment system provides a cost effective retrofit Aisle Cocooning Containment solution.

- It is good practice for a “Complete Free Form Aisle” to restrict any open span in the row to three rack widths e.g. 3 x 800mm cabinets = 2400mm (7-11”) or four rack widths e.g. 4 x 600mm cabinets = 2400mm (7-11”) – With “Basic Free Form Aisles” we recommend an open span of no more than 1600mm with each end of aisles including a minimum of 1 cabinet per aisle.

BLANK PANEL SIZE (Equivalent CANNON cabinet height)	600 WIDE	700 WIDE	800 WIDE
	PART CODE		PART CODE
42U Direct to Floor	BIWP4260CFF	BIWP4270CFF	BIWP4280CFF
42U Castor to Floor	BIWP4260COC	BIWP4270COC	BIWP4280COC
45U Direct to Floor	BIWP4560CFF	BIWP4570CFF	BIWP4580CFF
45U Castor to Floor	BIWP4560COC	BIWP4570COC	BIWP4580COC
47U Direct to Floor	BIWP4760CFF	BIWP4770CFF	BIWP4780CFF
47U Castor to Floor	BIWP4760COC	BIWP4770COC	BIWP4780COC

For further details on Free Form Aisle Cocooning please contact the Cannon Sales Team.

Size conversions: 1U = 44.45mm = 1 3/4" 600mm = 24" 700mm = 28" 800mm = 32" 1kg = 2.2lbs