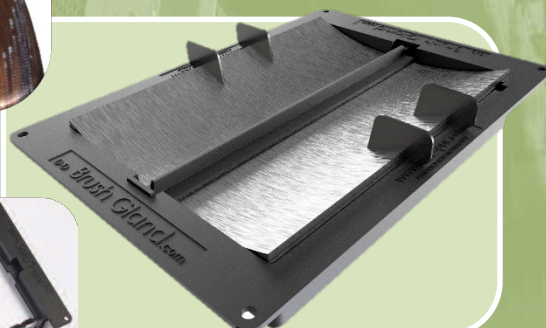
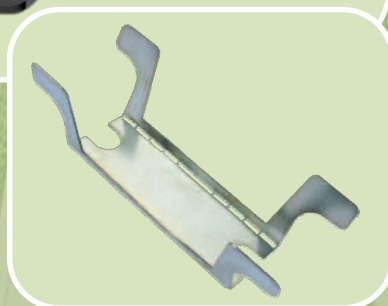
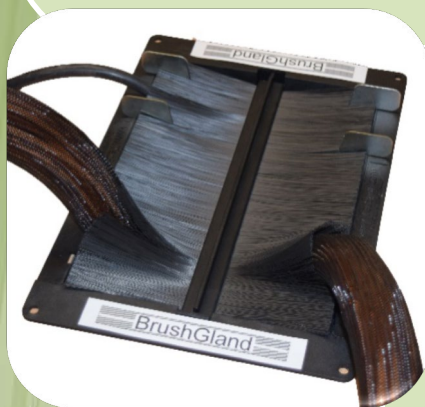
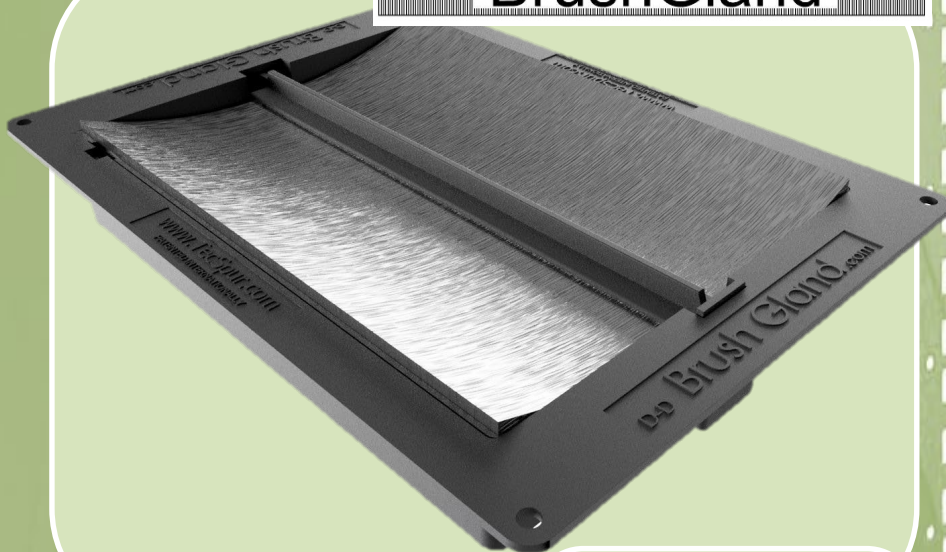


CANNON BRUSHGLAND

CABLE & AIR BLOCKING MANAGEMENT ACCESSORY

BrushGland™



- *The Floor Brush Gland/Grommet offers dramatic performance enhancements*
- *A unique concept that improves on the inadequacies in old fashioned floor grommets*
- *Simple to Retro-fit*
- *Surface or under tile mount fitting*
- *Drop in "All-in-One" Cable Management & Air-Blocking System*
- *Power/Data Partition (optional extra)*
- *Quick Fit removable Brush to ease access*

Cannon Technologies is a world-leading provider of energy-efficient, modular data centre infrastructure solutions, 19" Server & Equipment cabinets, professional services, and technical support.

Our products have been designed and developed to reduce the high costs and risks associated with traditional networking, communications and data center operations. Recognising the benefits of fully end-to-end solutions, Cannon design & manufacture modular scalable systems for worldwide applications.

Cannon's success lies in our team of skilled professionals whose depth of experience is unmatched, technology that sets the standard for the industry, and an unwavering commitment to providing excellent support for our customers.

Two issues are of significant importance to separate Cold and Hot Air via any grommet:-

- Cold air pressure should not lift the brush strip seal and escape through the gland
- Hot air should not be drawn downwards, below the tile and into the cold air flow

Note: IPACK 2001-15728ASME advises that grommet/tiles near the CRAC unit often experience negative air flow from inside the rack, pulling hot air down into the cold air stream.

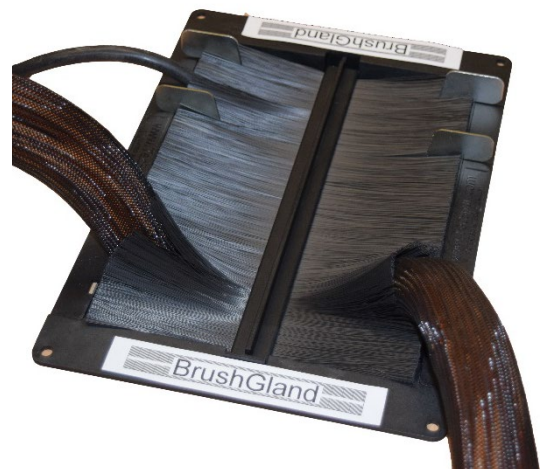
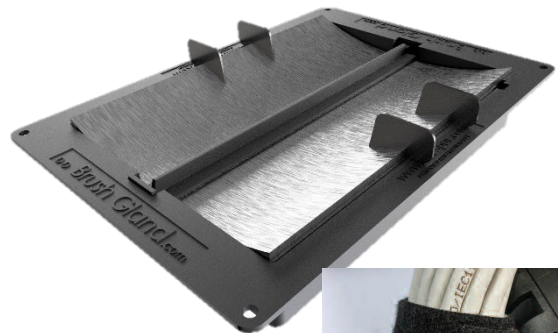
BrushGland™ Grommets have been laboratory tested and their brushes did not lift or flap until a large air pressure differential of 1500 pascals (0.44" water gauge) was reached.

Under-floor static pressure is commonly 6 pascals (0.025" water gauge) or less.

BrushGland™ Grommets substantially exceed the common static pressure with a high safety factor and will keep the Cold Air in.

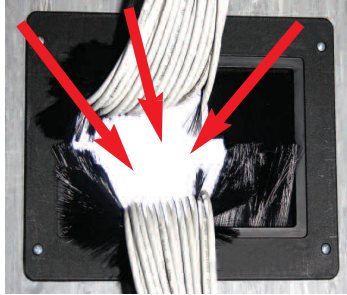
Unique Brush Gland

The Cannon brush gland is pre-stressed to resist air pressure. The patented system provides firm support to both ends of the brush; the brush tips press down onto the radiused sides of the grommet, acting like leaf springs. This imparts greater resistance to air pressure.



Seven Deadly Sins of Old Fashioned Grommets

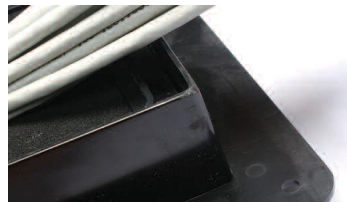
1. Cables significantly distort the root of the brush, opening a large air leakage path, destroying the air blocking objective of the gland.



2. Sharp corners in the gland can corrupt data.



3. No cable strain / tie off capability so total weight of cable has to be manually handled during install.



4. Power and data cabling are not reliably separated.



5. No visibility through gland adds complication.



6. No protection for cables against sharp cut tile edge.



7. Many types of old fashioned gland need to be on hand to cope with varying challenges.



Seven Wonders of the BrushGland™ Grommet

1. Cables pass tips of brush avoiding distortion and maintaining an effective air seal.



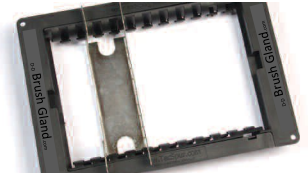
2. Big bend radii protects cables.



3. Tie off fingers take cable strain, easing effort and protecting cable & fibre.



4. Power and data are separated by an optional drop in Power/Data Partition.



5. Total "see through"* capability eases install.

*Brush is removable.



6. Radiused skirt protects cables from damage by sharp cut-edge of tile.



7. Just one **BRUSHGLAND** will satisfy all usual installation challenges reducing stock, space and cost.



BRUSHGLAND can be instantly installed in drop-in, surface mount, or retro-fitted around pre-cabled cut-outs in the tile.

- The brush is “Quick-Fit” and Quick-Release removable, allowing access through the gland to under floor void
- The brush is mounted on a central bar so that the tips of the brush rest on the sides of the gland where the brush is not heavily distorted by cables
- Cables do not pass through the middle of the brush where increased distortion will occur
- This patented orientation of the brush dramatically improves air blocking and supports the brush to prevent brush sag over-time
- Bend radii and cable tie points around the edge, avoid data cable damage and simplify installation
- BRUSHGLAND can be either “surface mounted”, “drop in” (into a cut out in the tile) or retro-fit around pre-installed cables, reducing the range of glands required to fit in a pre-cut tile
- The BRUSHGLAND has quick release features for instant separation of the frame when retro-fitting, so no tools are needed
- For Drop-in mode, the skirt of the gland protects data cables from sharp metal at the lower cut edges of the tile and provides bend radius at the lower and upper edges to protect data cable integrity
- An optional Data/Power Partition is available to separate power cable from data cable by the required amount, to protect against data corruption
- The separator bridge just drops in after large power connectors have been passed through the gland, so any size of pre-terminated connectors can be used
- Fibre optic cable can be introduced through the bridge to utilise the data separation space effectively. This maximises gland capacity without endangering data integrity

BRUSHGLAND

- Provides a higher level of air blockage when compared to other cabled grommets
- Is more protective of fragile data cable
- Separates power cable from data cable
- Is much more user-friendly
- Provides visual and physical access to the underfloor
- One BRUSHGLAND™ achieves all of the install needs i.e. Surface Mount, Drop-In or Retro-Fit

It's common sense!

Specification BRUSHGLAND:

- Cut-out size in floor tile: 270mm x 185mm ($10\frac{5}{8}$ " x $7\frac{5}{16}$ ")
- Fixing centres: 281mm x 195mm ($11\frac{1}{16}$ " x $7\frac{11}{16}$ ")
- Overall dimensions: 296mm x 210mm x 40mm ($11\frac{3}{4}$ " x $8\frac{1}{4}$ " x $1\frac{9}{16}$ ")
- Height above floor tile when fitted into floor tile: 3mm (flange thickness) ($\frac{1}{8}$ ")
- Height above floor tile when fitted above floor tile: 40mm ($1\frac{9}{16}$ ")
- Height of Power/Data Partition 'ears' (when fitted) above Floor Gland flanges: 20mm ($\frac{3}{4}$ ")

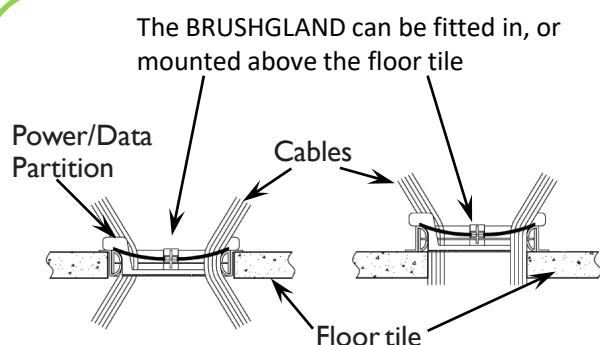
Frame Material:

Glass filled Polyamide (Fire Resistant)

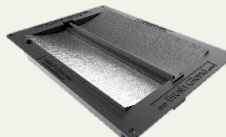
Power/Data Partition Material:

Galvanized Steel (Hand fold)

Colour: Black



Order Codes

Description	Part Code
BRUSHGLAND Assembly	NR178 
Power/ Data Partition	NR178-5 