

Broadcast Cabinets



- *Cannon range of Broadcast Cabinets and associated Accessories*

When the INSIDE is important, make the OUTSIDE Cannon

Cannon Broadcasting Cabinet

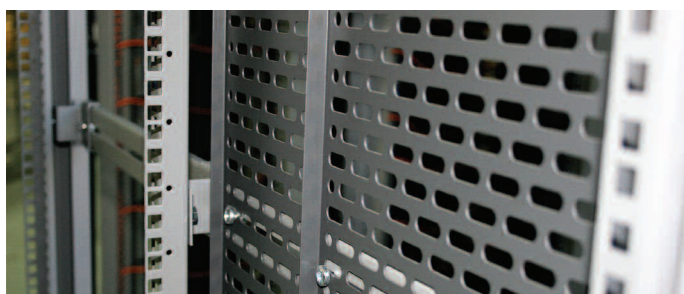
The International Standard for the Broadcast Industry

Standard Specification:

- Available in 42U and 47U heights
- 600mm wide
- 800mm, 900mm and 1000mm deep
- Front cover trims fitted with coloured Smart Trim. A variety of colours are available (see page xx).
- Base designed for maximum cable entry and ease of cabling to cable tray with a minimum of cable goose-necking
- Fitted with transit castors as standard
- 1000Kg static load rating & 450Kg dynamic load rating

Finish: Standard 1: Powder painted Velvet Black to RAL 9005
Standard 2: Powder painted Dusty Grey to RAL 7037

Feature: Set back depth members (panel mounting posts supports) increase the cabling space on each side of the cabinet at rear by 28mm giving an extra 56mm space in the back of a 600mm wide cabinet.



Picture shows wider cabling capacity at sides

Optional Accessories:

- Side panels
- Rear doors (glass, steel, or perforated)
- RAFT System compatible - for raised floor installations
- Raceway System compatible - for overhead cabling
- Fan tray - various options available
- Baying kit - for standard or special side baffle panels
- Cable tray - from 50mm to 300mm widths

Order codes

Broadcast Cabinets

600mm Wide x 800mm Deep

Description	Order Code
42U 600mm x 800mm	CABC426080
47U 600mm x 800mm	CABC476080

600mm Wide x 900mm Deep

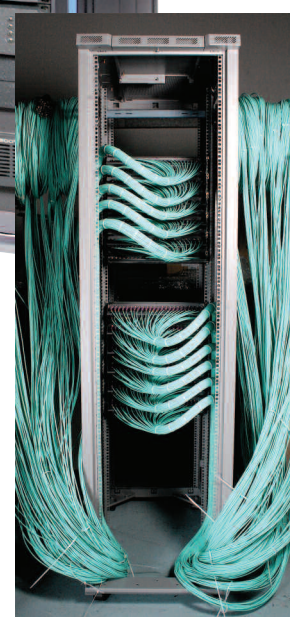
Description	Order Code
42U 600mm x 900mm	CABC426090
47U 600mm x 900mm	CABC476090

600mm Wide x 1000mm Deep

Description	Order Code
42U 600mm x 1000mm	CABC426099
47U 600mm x 1000mm	CABC476099



The Cannon Broadcasting Cabinet provides greatly enhanced cabling capacity at the sides due to unique, wider spaced depth members which position vertical cable trays at maximum width settings



Size conversions: 1U = 44.45mm = 1 3/4" 600mm = 24" 700mm = 28" 800mm = 32" 1kg = 2.2lbs

Broadcasting Cabinet

Accessories

Side Panels

- Side panels locate easily into the cabinet and lock by the means of two identical locks
- Same key used to unlock/lock door and side panels
- Standard side panel and baffle side panels available
- Cabinets are able to be bayed together with side panels attached

Finish: Powder painted Velvet Black to RAL 9005

Supplied: Individually

Side Panels – Standard Version

Standard version – 800mm deep

Description	Order Code
42U x 800mm deep	217C00008042
47U x 800mm deep	217C00008047

Standard version – 900mm deep

Description	Order Code
42U x 900mm deep	217C00009042
47U x 900mm deep	217C00009047

Standard version – 1000mm deep

Description	Order Code
42U x 1000mm deep	217C00009942
47U x 1000mm deep	217C00009947

Side Panels – Baffle Version

Baffle version – 800mm deep

Description	Order Code
42U x 800mm deep	218C02008042
47U x 800mm deep	218C02008047

Baffle version – 900mm deep

Description	Order Code
42U x 900mm deep	218C02009042
47U x 900mm deep	218C02009047

Baffle version – 1000mm deep

Description	Order Code
42U x 1000mm deep	218C02009942
47U x 1000mm deep	218C02009947

Cabinet Joining/Baying Kit

Cannon cabinet joining/bating kits offer a very simple solution where cabinets are required to be joined, or bayed together



One joining kit will bay two cabinets together

Baying Kits

Description	Order Code
For use with standard side panels	KP0236
For use with baffle side panels	KP0007

Rear Door Options

Cannon unique Smart Doors are removable and lockable. Equipped with sprung hinges for easy removal with hinging to the left or right-hand side of the cabinet.

180° opening when bayed, 270° opening as stand alone and at end of bay. These doors allow personnel to exit past a cabinet in any direction at front, side or rear with no obstruction and with minimal danger of snagging loose clothing. These requirements are critical, particularly in an emergency, i.e. in smoke filled rooms, even with wide gangways.

- Vented frame glass door
- Vented frame steel door
- MaxiVent Plus perforated door

Vented frame glass door



600mm wide

Height	Order Code
42U	235B85600042
47U	235B85600047

Vented frame steel door



600mm wide

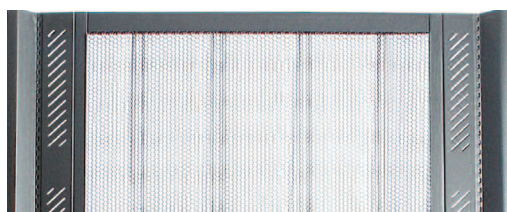
Height	Order Code
42U	235B65600042
47U	235B65600047

MaxiVent Plus perforated door



600mm wide

Height	Order Code
42U	235B95600042
47U	235B95600047



Size conversions: 1U = 44.45mm = 1 3/4" 600mm = 24" 700mm = 28" 800mm = 32" 1kg = 2.2lbs



Standard Cabinets & Accessories



Broadcast Cabinets



Specialist Cabinets



CannonGuard



Aisle Cocooning



Power



Cooling



T4 Data Centers



AIR-LOKK

To request a different product brochure please call us on
+44 (0)1425 638 148

Cannon Technologies Group Ltd

Head Office: Cannon Technologies Group Ltd

Queensway, New Milton, Hampshire, BH25 5NU United Kingdom

Tel: +44 (0)1425 638 148 Fax: +44 (0)1425 619 276

E-mail: sales@cannontech.co.uk

www.cannontech.co.uk

For all Cannon office locations please visit www.cannontech.co.uk



All the information given herein, including illustrations, graphs and technical illustrations are believed to be reliable at time of going to print. Cannon makes no guarantees as to its accuracy or completeness and disclaims any liability regarding its use. We advise that the user should evaluate the suitability of our products for each specific application.

Cannon's responsibilities are only those listed in our Standard Terms and Conditions of Sale, and in no instance will Cannon be liable for any incidental, indirect or consequential damages arising from sale, resale, transfer or misuse of the products.

Cannon Technologies and the Cannon logo are registered trademarks of the Cannon Technologies Group.

For your local distributor please contact: