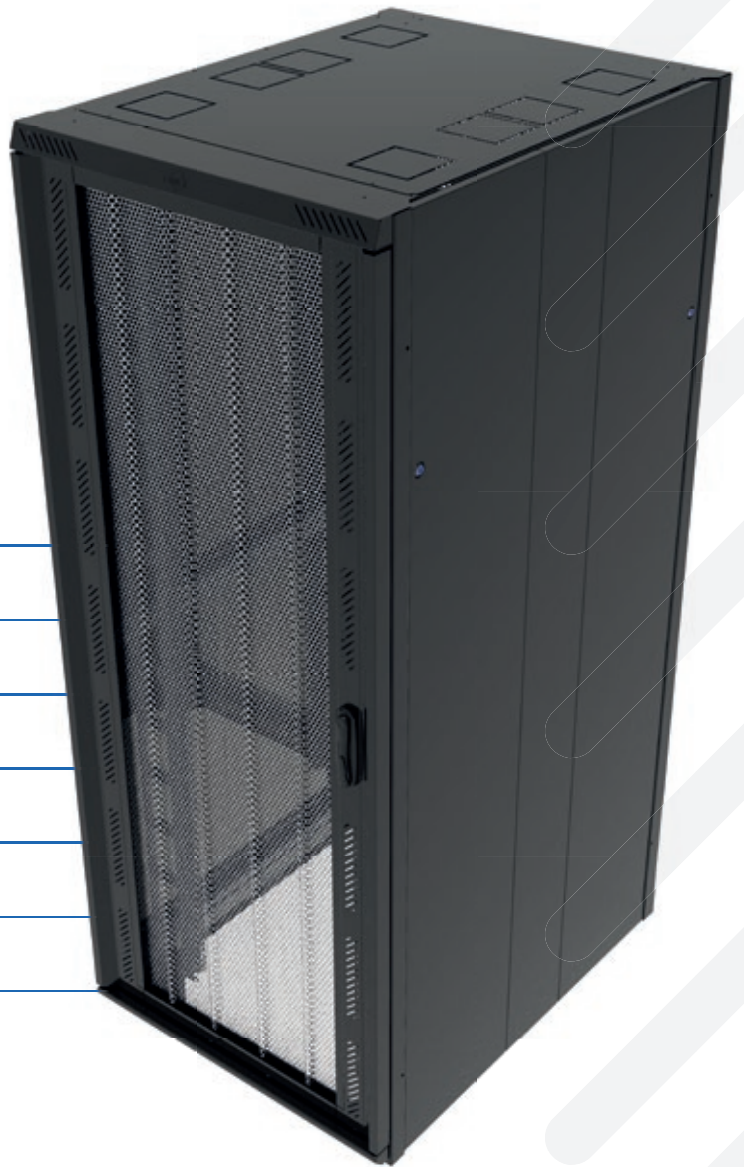


CANNON DIRECT

EPIC-X

**CABINET
RANGE**



19" Server Cabinet

Multiple Range of Sizes

Rapid Availability

Accessories available

Secure, Safe Protection

'IT' Ready

Flexible Innovative Design

**1 - 3
WORKING
DAY DELIVERY
SERVICE**

(Dependent on
location)

See our website for our latest brochures
and video for modular data centres

cannontech.co.uk

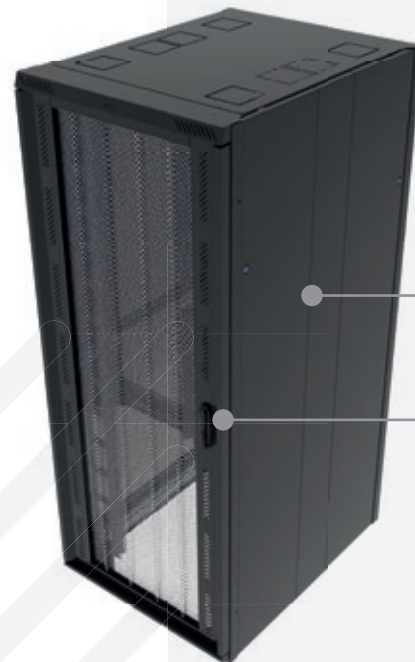
+44(0)1425 632600
SALES@CANNONTECH.CO.UK

What is EPIC-X?

Our EPIC-X range is a cutting-edge modular data centre solution designed for scalability, energy efficiency and high performance.

With customisable configurations and advanced security features, EPIC-X provides a future-proof infrastructure to meet the evolving demands of your business.

Ideal for industries with high data demands, including telecommunications, electronic packaging, finance, defence and IT.



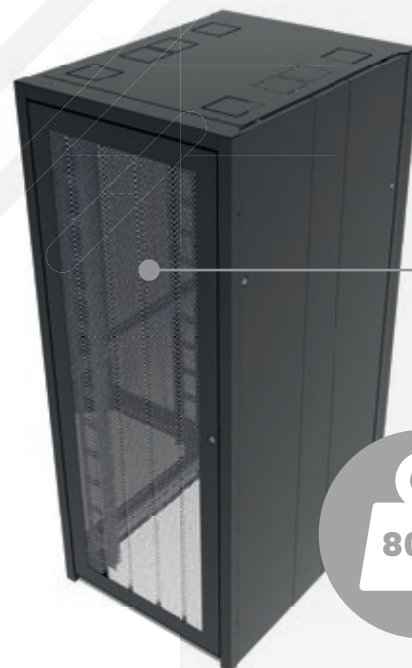
Removable/
lockable side
panels

Quick Release
Perforated 270
degree opening
front door

KEY FEATURES

- **Modern & Modular Design**
Flexible, scalable units that grow with your data needs.
- **Easy Access**
Exceptional base access and unique 180°/270° opening doors.
- **Energy Efficiency**
Advanced cooling systems and power management for better energy consumption.
- **Rapid Install**
International mounting posts and removable, multi-entry roof panel for flood wiring for rapid installation.
- **Safe, Secure Protection**
Steel construction, built for large static loads.
- **Customisable Configurations**
Range of options for power, cooling and layout.
- **Rapid Deployment**
Pre-built and factory-fitted solutions reducing installation time.

EPIC-X fitted as standard with perforated front & rear doors, side panels, top cover with knockouts in standard RAL9005 Black.



Quick Release
Perforated 120
degree opening
rear door

800KG

EPIC-X is designed to withstand static loads of 800kg.

TECHNICAL INFORMATION

- Accommodates all 19-inch rack-mountable servers with mixed server-depth solutions
- Heights: 42U & 47U Widths: 600mm, 800mm Depths: 1000mm & 1200mm
- Perforated 78% open area front door and rear perforated frame door
- Four adjustable 19" panel/slide mounts
- Large cable access entry point(s) top and base
- Standard finish in Durable Powder Paint Black to RAL 9005
- Load rating - 800kg evenly distributed static load
- Manufactured (where applicable) to BS.EN60950 2002, IEC 60297, EIA-310-D, UL94V0
- Four infinitely adjustable 19-inch mounting posts for universal equipment
- Four transit castors fitted or supplied loose

Cannon's top panel cable entry "knock-outs" provide a great addition for applications with multiple entry point requirements e.g. to central vertical cable tray, front 19" or rear area for PDU equipment etc.



'Knock-outs' allow for multiple access points



Standard configurations are available within 1 to 3 working days; see sizing table.



1 - 3
WORKING
DAY DELIVERY
SERVICE

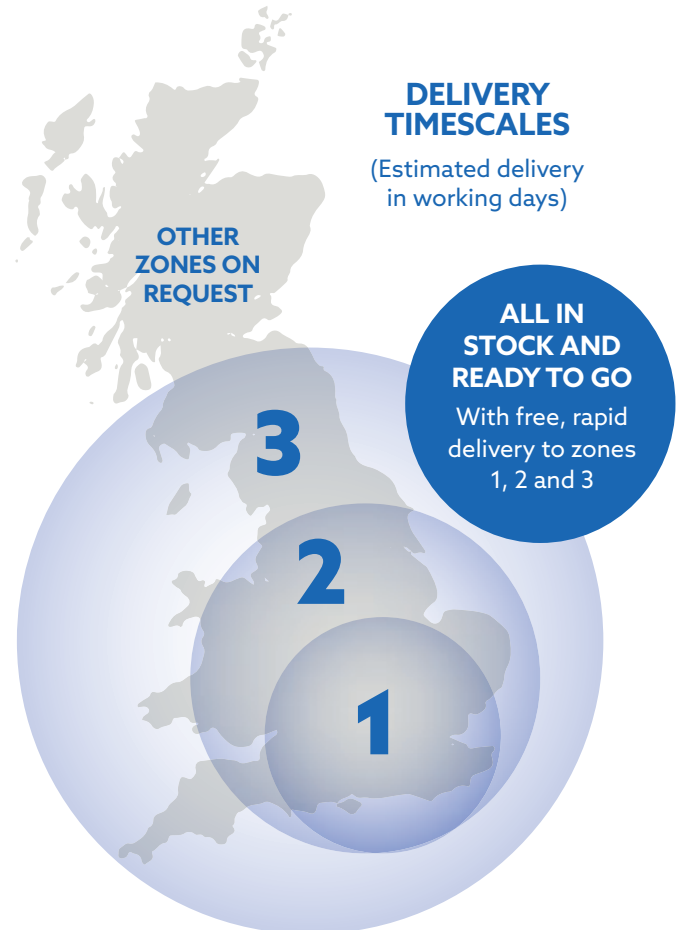
OVERVIEW CHART

A MULTI-PURPOSE HIGHLY VERSATILE CABINET

SIZES			PART CODE	DESCRIPTION
U	W	D		
42	600	1000	EPIC-X426099	42U 600 WIDE X 1000 DEEP EPIC XPRESS 19" SERVER CAB
	600	1200	EPIC-X426012	42U 600 WIDE X 1200 DEEP EPIC XPRESS 19" SERVER CAB
	800	1000	EPIC-X428099	42U 800 WIDE X 1000 DEEP EPIC XPRESS 19" SERVER CAB
	800	1200	EPIC-X428012	42U 800 WIDE X 1200 DEEP EPIC XPRESS 19" SERVER CAB
47	600	1000	EPIC-X476099	47U 600 WIDE X 1000 DEEP EPIC XPRESS 19" SERVER CAB
	600	1200	EPIC-X476012	47U 600 WIDE X 1200 DEEP EPIC XPRESS 19" SERVER CAB
	800	1000	EPIC-X478099	47U 800 WIDE X 1000 DEEP EPIC XPRESS 19" SERVER CAB
	800	1200	EPIC-X478012	47U 800 WIDE X 1200 DEEP EPIC XPRESS 19" SERVER CAB

ACCESSORIES

PART NUMBER	DESCRIPTION
CA155	1U Cable Management Panel
NR223-1U	1U Blanking Panel
NR223-3U	3U Blanking Panel
711C00090900	90mm X 90mm Cannon Vertical Cable Management Rings Fit Directly onto the Front or Rear Faces of Each Infill Panel
047C00001542	42U 150mm Wide Vertical Cable Management
047C00003042	42U 300mm Wide Vertical Cable Management
047C00001547	47U 150mm Wide Vertical Cable Management
047C00003047	47U 300mm Wide Vertical Cable Management
PDU-EPICX-2024	10 Way x C13 Vertical Mount PDU 3M Lead 16A BS4343/EN 60306 Plug. PDUs will come in an assortment of colours
PDUC-EPICX-2024	20 Way x C13/4 X C19 Vertical PDU 3M Lead 16A BS4343/EN 60306 Plug. PDUs will come in an assortment of colours



CANNON TECHNOLOGIES LTD

Queensway, New Milton
Hampshire BH25 5NU

+44(0)1425 632600
SALES@CANNONTECH.CO.UK

cannotech.co.uk 